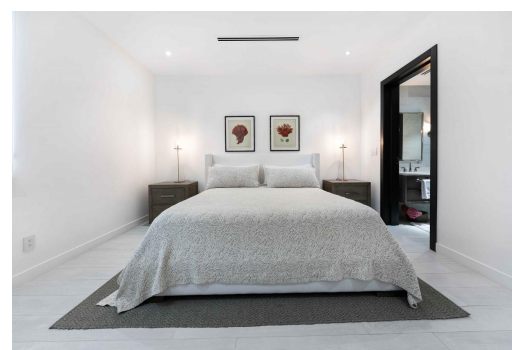
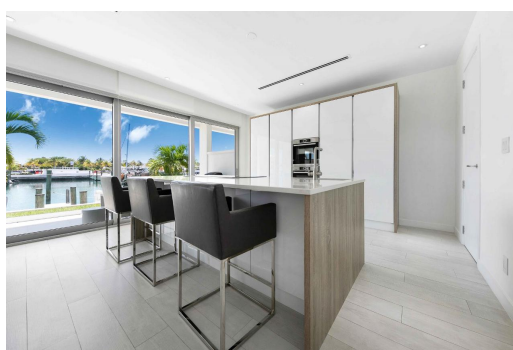
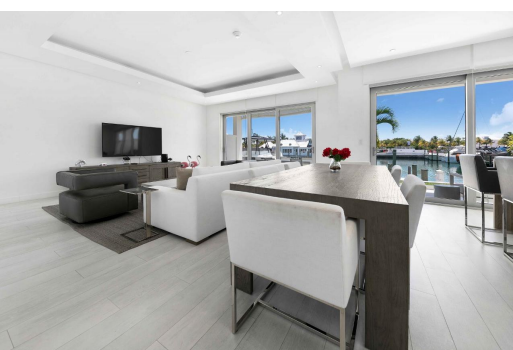


# MARINA, PALM CAY, Yamacraw, New Providence/Paradise



## Revel in luxury and opulence at this striking new condominium in The Bahamas. The residences at One...

Revel in luxury and opulence at this striking new condominium in The Bahamas. The residences at One Marina offers a whopping 1,466 sq. ft. of refined living space on one level, with designer finishes and thoughtful touches throughout. Upon entering the condo, your attention is immediately drawn to the open plan living area that features immaculate views of the 154-slip marina and turquoise ocean beyond. In total there are 3 bedrooms and 2 full bathrooms as well as a custom gourmet kitchen equipped with luxurious Gaggenau appliances and marble counters. Conveniently, this condo also includes large laundry room and a lovely powder room for guests. Residents at One Marina enjoy full access to the array of amenities on offer at Palm Cay, including the beachfront clubhouse and restaurant, docks...read more on our website.

Bedrooms: 3  
Bathrooms: 2  
Lot Size: 1466  
Subdivision: Yamacraw  
Features: 24 Hour Security, Canal Front, Furnished, Gated Community, Impact Windows, Landscaped, Main Level Entry, Partial Furnished, Quiet Area, Recreation Nearby, Road - Paved, Shopping Nearby, Stand-by Generator, Swimming Pool

ONE MARINA, PALM CAY,  
Yamacraw, New  
Providence/Paradise Island  
Phone:



**\$1,100,000 ID# M57857** [View Online](#)  
[www.sarlesrealty.com](http://www.sarlesrealty.com)