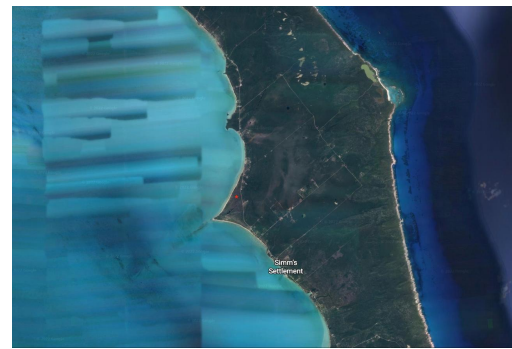
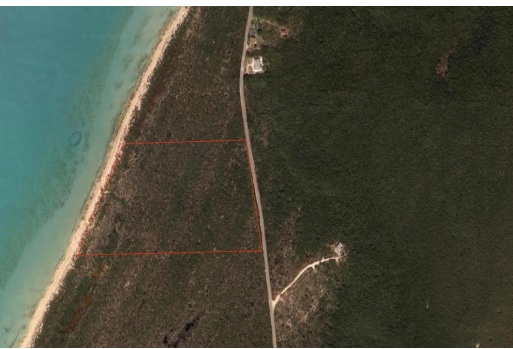
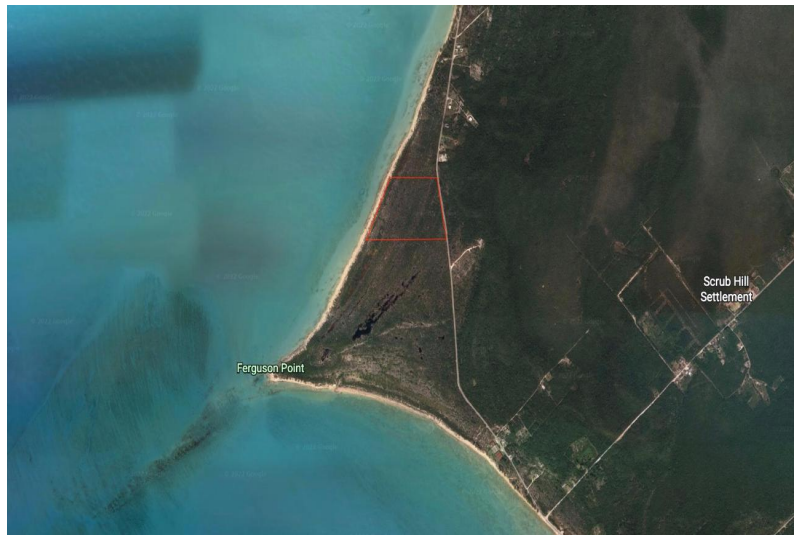


WATERFRONT ACREAGE, Simms, Long Island



With an expansive oceanfront view and beachfront access, this 27 acre lot can be purchased...

With an expansive oceanfront view and beachfront access, this 27 acre lot can be purchased separately or along with the 15.93 acres of hillside property across the street (please view MLS #48938 for details). With proximity to both Deadman's Cay or Stella Maris airports, this opportunity is awaiting your resort, hotel or residential development. Power can be pulled from Queen's Highway. Call today for more information....read more on our website.

Bedrooms: 0
Bathrooms: 0
Lot Size: 1176120
Subdivision: Simms
Features: Acreage, Beach
Front, Easy Access,
Highway Access, None,
Waterfront - Ocean

WATERFRONT ACREAGE,
Simms, Long Island
Phone:



\$1.080,000 ID# M48936 [View Online](#)
www.sarlesrealty.com