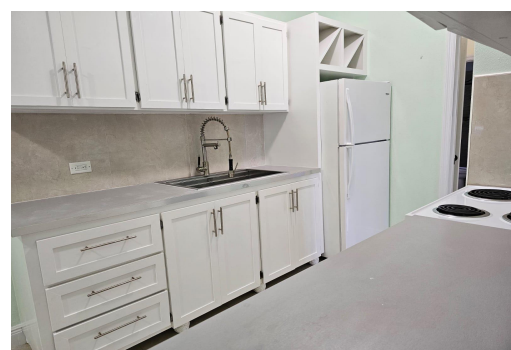
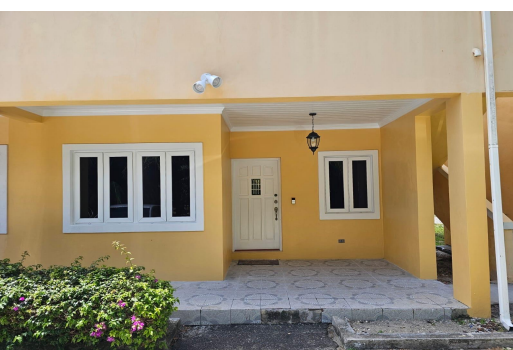


# CORAL PALM CONDOMINIUMS, Prince Charles Drive, New Providence



## Nestled just off Prince Charles Drive in the desirable Nassau East area, Unit 4 of Coral Palm...

Nestled just off Prince Charles Drive in the desirable Nassau East area, Unit 4 of Coral Palm Condominiums offers the perfect blend of comfort and convenience. This charming 1-bedroom, 1-bath condo boasts a thoughtfully designed 562 sq. ft. interior complemented by a cozy 50 sq. ft. porch—ideal for enjoying quiet mornings or evening breezes. Tastefully laid out with a modern touch, the unit features impact windows, sleek finishes, and a functional layout that maximizes every square foot....read more on our website.

Bedrooms: 1

Bathrooms: 1

Lot Size: 612

Subdivision: Prince

Charles Drive

Features: Impact Windows

CORAL PALM CONDOMINIUMS,  
Prince Charles Drive, New  
Providence/Paradise Island  
Phone:



**\$209,000 ID# M62284** [View Online](#)  
[www.sarlesrealty.com](http://www.sarlesrealty.com)