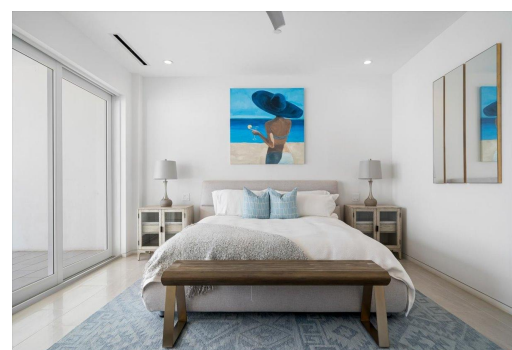
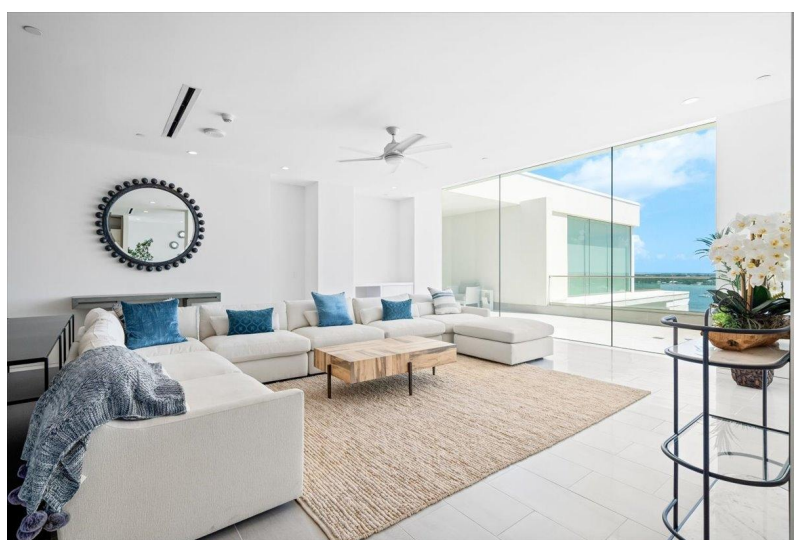
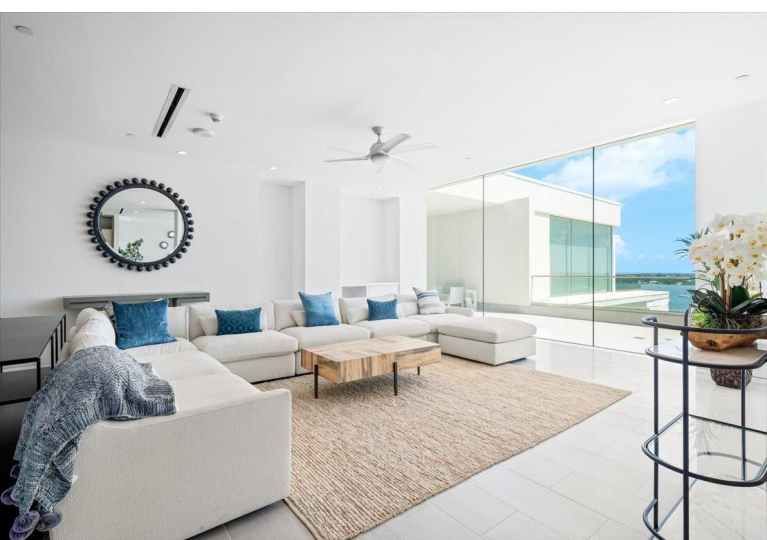


PARADISE ISLAND DRIVE, Paradise Island, New Providence/



This magnificent four-bedroom, 4.5-bathroom penthouse, is ready for immediate occupancy. This...

This magnificent four-bedroom, 4.5-bathroom penthouse, is ready for immediate occupancy. This prestigious residence offers breathtaking views of Nassau Harbour, presenting an unparalleled panorama from its prime Paradise Island location. Tasteful furnishings adorn this spacious open floor plan penthouse. You'll find premium finishes, including 8-foot interior doors, custom-designed Italian kitchen cabinetry, and a suite of Wolf, Bosch, and Sub-Zero appliances. As a resident of One Ocean, you'll benefit from an array of exclusive amenities designed for convenience and peace of mind. Enjoy 24-hour security, secure underground parking, a private elevator entrance directly into your home, a lavish pool and entertainment deck, and dedicated concierge services at the front desk. This is more tha...read more on our website.

Bedrooms: 4
Bathrooms: 4
Lot Size: 4600
Subdivision: Paradise Island
Features: 24 Hour Security, Furnished, Golf Course Nearby, Harbour, Kitchen Built-in(s), Main Level Entry, Marina Nearby, Night Security, Recreation Nearby, Shopping Nearby, Stand-by Generator, Swimming Pool, View - Ocean

One Ocean PARADISE ISLAND
DRIVE, Paradise Island, New
Providence/Paradise Island
Phone:



\$22,000 ID# M62816 [View Online](#)
www.sarlesrealty.com