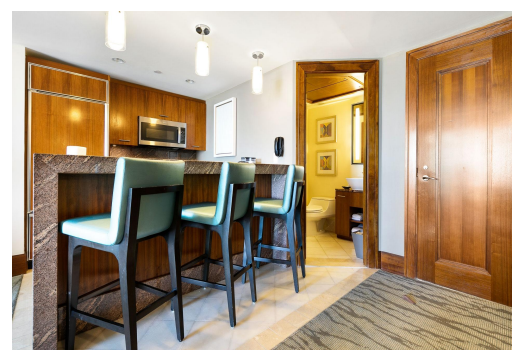
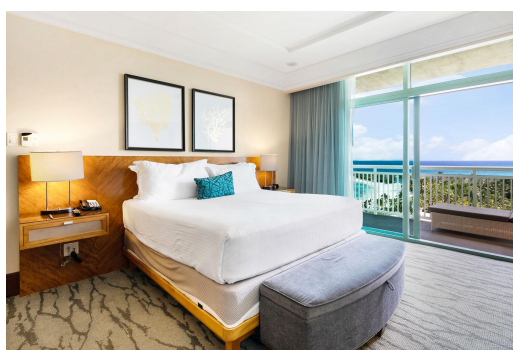


# THE REEF AT ATLANTIS, Paradise Island, New Providence/Paradise Island



## Well priced 2 bedroom unit on the resort side of The Reef. These 10th floor units can be used...

Well priced 2 bedroom unit on the resort side of The Reef. These 10th floor units can be used together as a two bedroom or they can be used separately as a one bedroom with living room and kitchen on one side and a studio on the other. These not only afford you the most gorgeous views of Paradise Beach and Nassau Harbour but they provide you with a relaxing atmosphere in a home away from home. Newly updated designer furniture, concierge services, and beach views are just a few of the perks. This exclusive ownership experience is unlike any other in the Caribbean, where you can enjoy the benefits of luxury without ever worrying about the headaches of a second home. In a residence where every amenity is at your fingertips, don't forget to sit back, relax, and take it all in. Have one of Atla...read more on our website.

Bedrooms: 2  
Bathrooms: 3  
Lot Size: 435600  
Subdivision: Paradise Island  
Features: 24 Hour Security, Acreage, Beach Front, Family Oriented, Furnished, Golf Course Dev, Impact Windows, Landscaped, Main Level Entry, Quiet Area, Recreation Nearby, Recreational, Road - Paved, Shopping Nearby, Swimming Pool, View - Ocean

THE REEF AT ATLANTIS,  
Paradise Island, New  
Providence/Paradise Island  
Phone:



**\$1,300,000 ID# M59553** [View Online](#)  
[www.sarlesrealty.com](http://www.sarlesrealty.com)