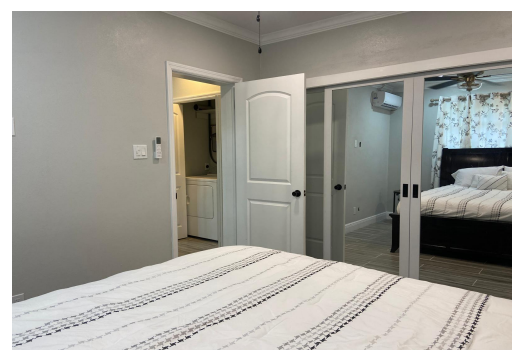


JASMINE CLOSE, West Bay Street, New Providence/Paradise



This brand-new, modern apartment is tastefully done and giving sophistication with neutral shades,...

This brand-new, modern apartment is tastefully done and giving sophistication with neutral shades, earth toned tiles, granite countertops and a tropical backsplash in the kitchen. It is available fully furnished and has everything needed for a professional or couple including AC, a porch and a private front lawn on the exterior. Ideally located near to the beach, Old Fort Bay, the international airport, Lyford Cay, private schools and much more. Call today!...read more on our website.

Bedrooms: 1

Bathrooms: 1

Lot Size: 8000

Subdivision: West Bay Street

Features: Can Be Rented,
Family Oriented,
Furnished, Highway
Access, Quiet Area,
Recreation Nearby, Road
- Paved, Shopping
Nearby

13 JASMINE CLOSE, West Bay
Street, New Providence/Paradise
Island
Phone:



\$2,000 ID# M62710 [View Online](#)
www.sarlesrealty.com