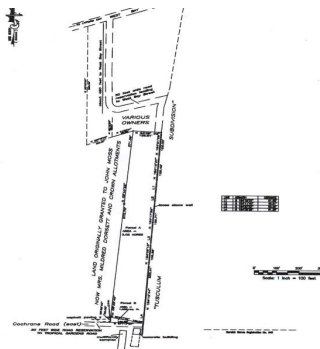


TROPICAL GARDENS, West Bay Street, New Providence/Paradise Island



With direct access from West Bay Street, this 3 acre parcel of land is in a prime location for...

With direct access from West Bay Street, this 3 acre parcel of land is in a prime location for further development. The land can be split into multiple lots with individual houses or blocks of condominiums can be constructed. A rare opportunity to find a parcel of this size with this unique development potential within West Nassau....read more on our website.

Bedrooms: 0

Bathrooms: 0

Lot Size: 131551

Subdivision: West Bay Street

Features: None

PARCEL 1 TROPICAL
GARDENS, West Bay Street,
New Providence/Paradise Island
Phone:



\$1.295,000 ID# M52254 [View Online](#)
www.sarlesrealty.com