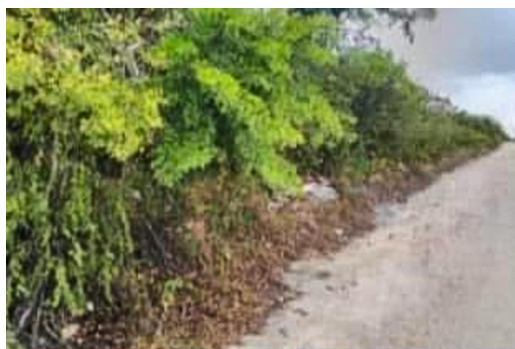
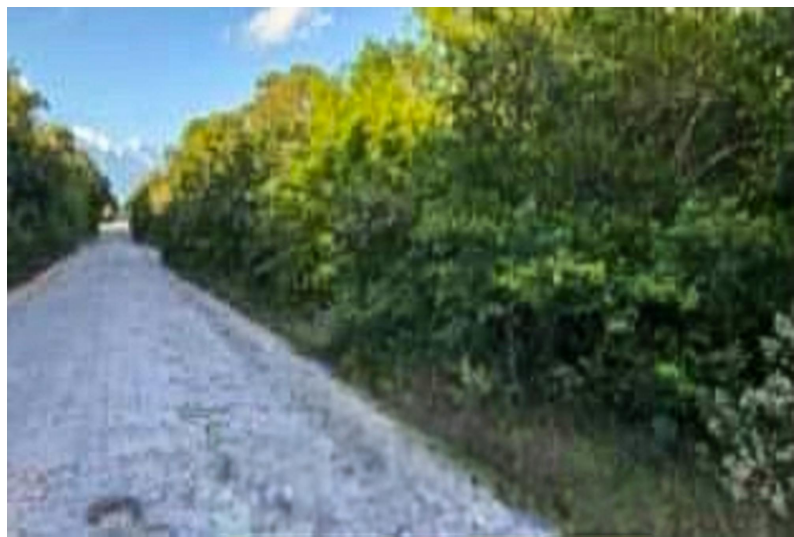


## A gravel path leads through a dense forest towards distant mountains. The path is made of light-colored gravel and stretches from the foreground into the distance. The forest is composed of tall, green trees with dense foliage. In the far distance, a range of mountains is visible under a clear blue sky with a few wispy clouds. The overall scene is bright and sunny, suggesting a clear day.



BAHAMA SOUND, Bahama  
Sound, Exuma &#038; Exuma  
Cays  
ng Phone:



James Sarles Realty logo featuring a stylized 'JS' monogram above the text 'JAMES SARLES REALTY' in a serif font, all enclosed within a blue oval.

