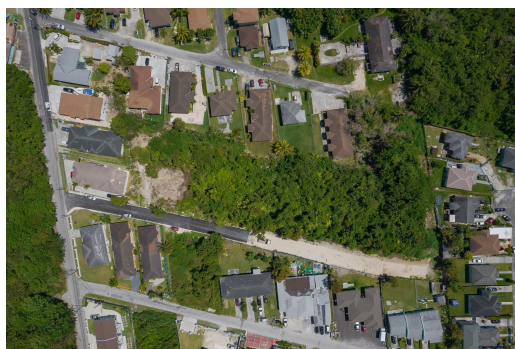
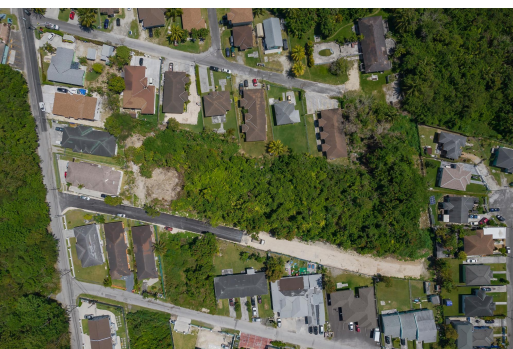
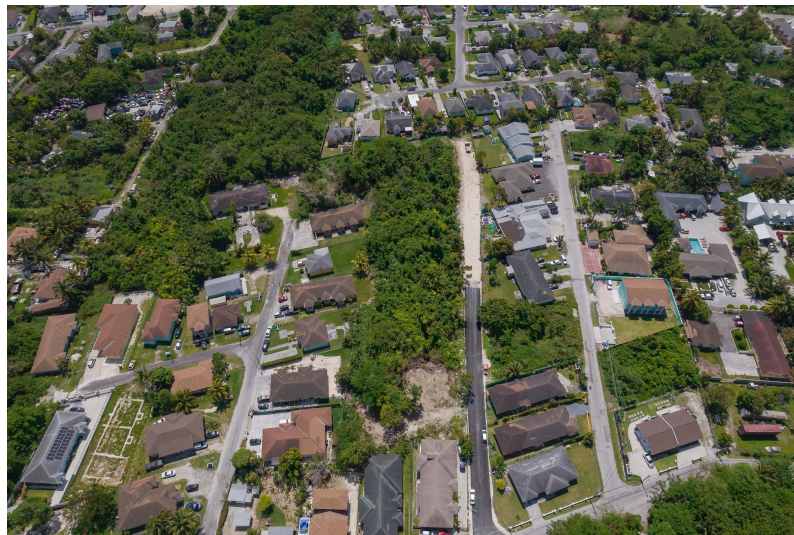


BELLOT ROAD, Gladstone Road, New Providence/Paradise Isl



Unlock the potential of this substantial 15,384 square foot multi-family lot, perfectly positioned...

Unlock the potential of this substantial 15,384 square foot multi-family lot, perfectly positioned for a savvy investor or developer. Lot H offers ample space and flexibility for a wide range of residential development concepts—from stylish townhouses to a boutique condo complex. Situated in the thriving Bellot Road corridor, this property benefits from easy access to schools, shopping centers, dining venues, and entertainment hubs—making it highly desirable for both future residents and rental markets. For those seeking an expanded vision, Lot H can be combined with the adjacent Lot G, resulting in a total of 29,559 square feet—an exceptional footprint ideal for a larger development project with even greater returns. With Nassau's land supply becoming increasingly scarce, opportunit...read more on our website.

Bedrooms: 0

Bathrooms: 0

Lot Size: 15384

Subdivision: Gladstone Road

Features: None,

Recreation Nearby,

Shopping Nearby

BELLOT ROAD, Gladstone Road,
New Providence/Paradise Island
Phone:



\$275.000 ID# M62777 [View Online](#)
www.sarlesrealty.com