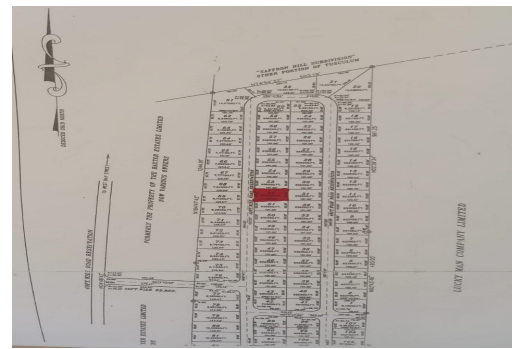


# YUMA ESTATES, West Bay Street, New Providence/Paradise Is



**Situated in the peaceful and desirable Yuma Estates community, this 6,500 sq. ft. vacant...**

Situated in the peaceful and desirable Yuma Estates community, this 6,500 sq. ft. vacant single-family lot is the perfect spot to build your ideal home. The lot is level and conveniently located. Enjoy the charm of a family-friendly neighborhood just minutes from shopping, restaurants and so much more. This lot offers great value and potential. Call today to make it yours!...read more on our website.

Bedrooms: 0

Bathrooms: 0

Lot Size: 6500

Subdivision: West Bay Street

Features: 24 Hour

Security, Family Oriented

YUMA ESTATES, West Bay  
Street, New Providence/Paradise  
Island  
Phone:



**\$200.000 ID# M63033 [View Online](#)**  
**[www.sarlesrealty.com](http://www.sarlesrealty.com)**