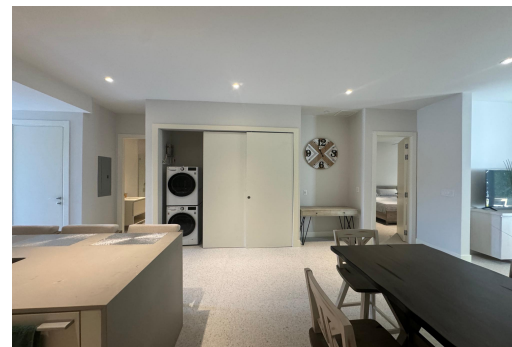


WEST END, Love Beach, New Providence/Paradise Island



This beautifully appointed 3-bedroom, 2-bathroom residence is located in the newly developed West...

This beautifully appointed 3-bedroom, 2-bathroom residence is located in the newly developed West End, nestled in the heart of Love Beach on the western end of New Providence. The home features a brand-new, never-lived-in modern kitchen with seamless panelled cabinetry, a waterfall-edge countertop, built-in oven, and sleek electric cooktop – all finished to a high standard. The open-concept living and dining areas are spacious and stylish, opening through double glass doors onto a serene, bamboo-lined private patio – perfect for relaxed outdoor living. The primary suite offers generous proportions, a built-in closet, and a luxurious en-suite bathroom with a soaking tub, floating double vanity, and walk-in glass shower. Two additional guest bedrooms include built-in storage and contempo...read more on our website.

Bedrooms: 3

Bathrooms: 2

Lot Size: 1500

Subdivision: Love Beach

Features: 24 Hour

Security, Fully Walled,

Furnished, Hurricane

Windows, Kitchen

Built-in(s), Landscaped,

Main Level Entry,

Stand-by Generator,

Swimming Pool

WEST END, Love Beach, New
Providence/Paradise Island

Phone:



\$940.000 ID# M63028 [View Online](#)
www.sarlesrealty.com