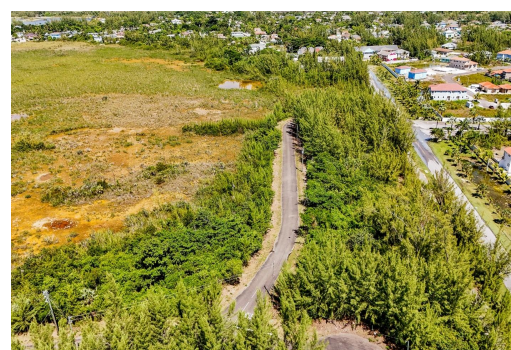
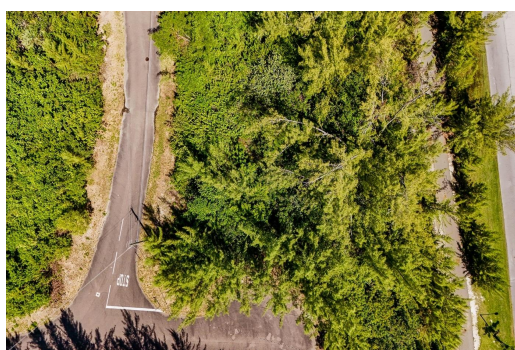
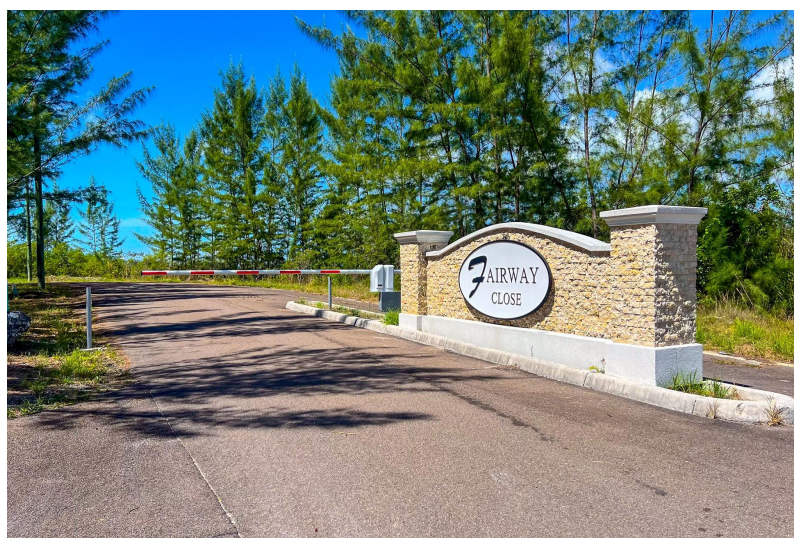
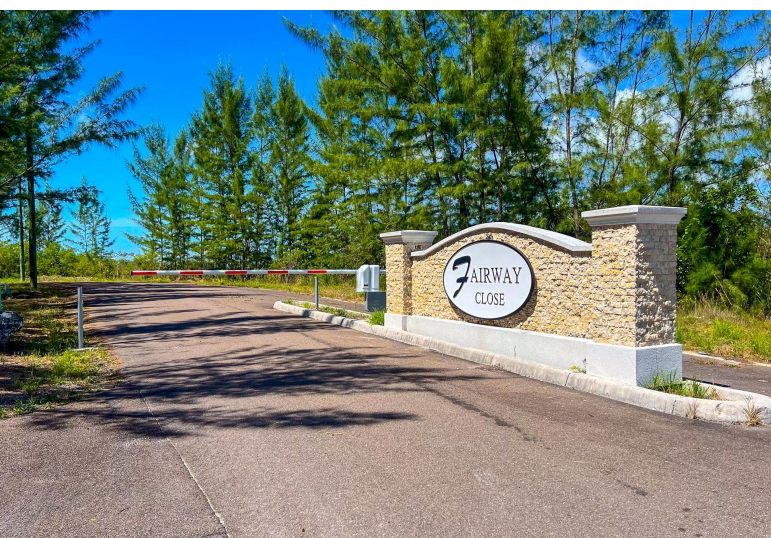


# , FAIRWAY CLOSE, Coral Harbour, New Providence/Paradi



## Discover the perfect opportunity for investment at Fairway Close, an exclusive community nestled in...

Discover the perfect opportunity for investment at Fairway Close, an exclusive community nestled in the heart of Coral Harbour. These prime single family lots are ideally situated within walking distance to pristine beaches, offering a tranquil lifestyle combined with convenience. Lot 16 is 7,265 square feet. Enjoy easy access to essential amenities, including schools, shopping centers, and the airport, all just a short drive away. Each lot is equipped with essential utilities, ensuring a seamless building experience. Safety and privacy are paramount, as the community is gated and secure, providing peace of mind for residents and investors alike. Phase 1 has already sold out and we are introducing Phase 2! Whether you're looking to build a new home or create a vibrant community, Fairway ...read more on our website.

Bedrooms: 0

Bathrooms: 0

Lot Size: 7265

Subdivision: Coral Harbour

Features: Easy Access,

Family Oriented, Gated

Community, None, Pets

Allowed, Quiet Area,

Road - Paved, Treed Lot

LOT 16, FAIRWAY CLOSE, Coral

Harbour, New

Providence/Paradise Island

Phone:



**\$100.000 ID# M59698** [View Online](#)  
**[www.sarlesrealty.com](http://www.sarlesrealty.com)**