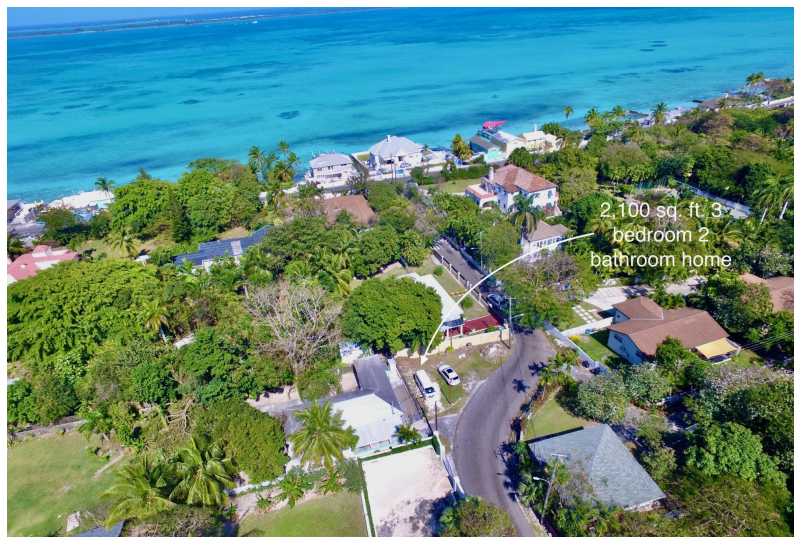
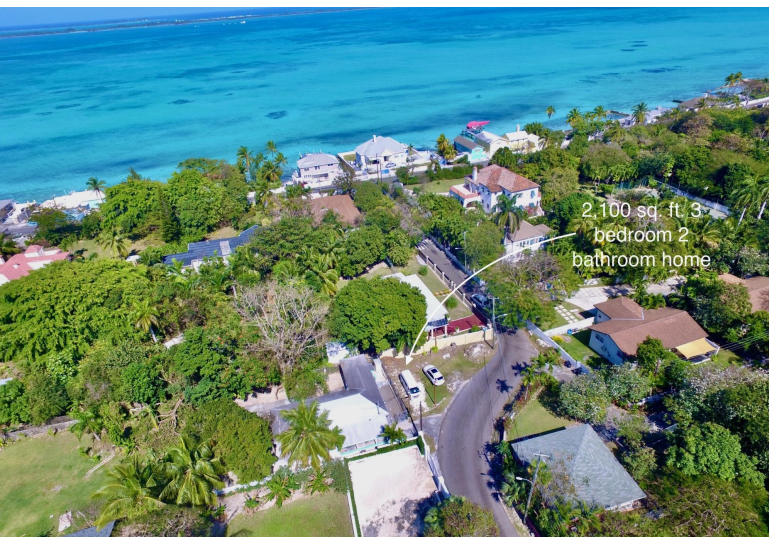


# SANS SOUCI, Eastern Road, New Providence/Paradise Island



**This beautifully built home is located in the sought after Sans Souci residential community. With...**

This beautifully built home is located in the sought after Sans Souci residential community. With approximately 2,100 sq. ft. of living space, it features three bedrooms, two baths, a cozy living room, a dining room and a well equipped kitchen, complete with laundry room and split air-conditioning. Enjoy the convenience of a covered car garage and a large fully enclosed yard, that's perfect for entertaining. This home is ideal as a starter home for a new family or for anyone looking to downsize. Kitchen appliances are included in the sale. This turn-key home offers everything you need for a comfortable lifestyle. Don't miss your chance to call this place home, contact today to schedule a private tour!...read more on our website.

Bedrooms: 3  
Bathrooms: 2  
Lot Size: 10000  
Subdivision: Eastern Road  
Features: Cable, Fully  
Fenced, Hillside,  
Landscaped, Private  
Setting, Road - Paved

SANS SOUCI, Eastern Road,  
New Providence/Paradise Island  
Phone:



**\$335.000 ID# M61353 [View Online](#)**  
**[www.sarlesrealty.com](http://www.sarlesrealty.com)**