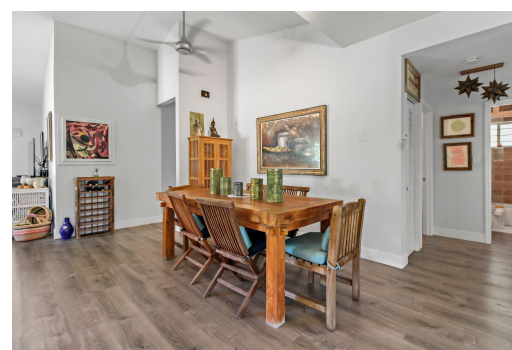


# AMBER CLOSE, Yamacraw, New Providence/Paradise Island



**Tucked away at the end of a quiet cul-de-sac, this private oasis transports you the moment you...**

Tucked away at the end of a quiet cul-de-sac, this private oasis transports you the moment you arrive. Mature landscaping and a charming winding path lead to a welcoming entrance that sets the tone for the rest of the home. This Eleuthera model offers an open, flowing floor plan with 3 bedrooms and 2 bathrooms, thoughtfully expanded with an additional room—perfect as a home office, studio, guest suite, or whatever your heart desires. It also features its own private entrance, adding flexibility and value. Lovingly maintained by the same family since it was built in 1998, this home radiates warmth and attention to detail throughout. The interior is bright and inviting, while the spacious back deck is the ideal spot to relax or entertain. The sparkling, well-kept pool adds to the home's appeal...read more on our website.

Bedrooms: 4

Bathrooms: 2

Lot Size: 6534

Subdivision: Yamacraw

Features: 24 Hour

Security, Furnished,

Garden Area, Impact

Shutters, Impact

Windows, Main Level

Entry, Night Security,

Stand-by Generator,

Swimming Pool, Workshop

in House

6 AMBER CLOSE, Yamacraw,

New Providence/Paradise Island

Phone:



**\$625,000 ID# M62847 [View Online](#)**  
**[www.sarlesrealty.com](http://www.sarlesrealty.com)**