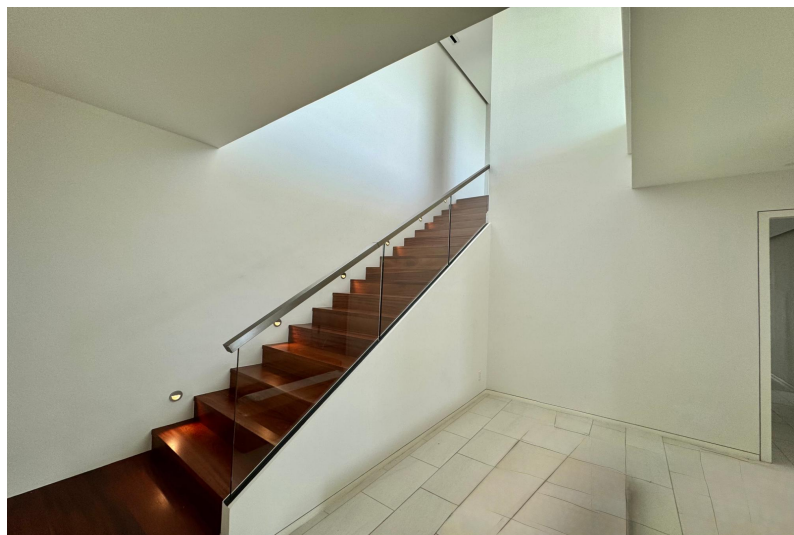
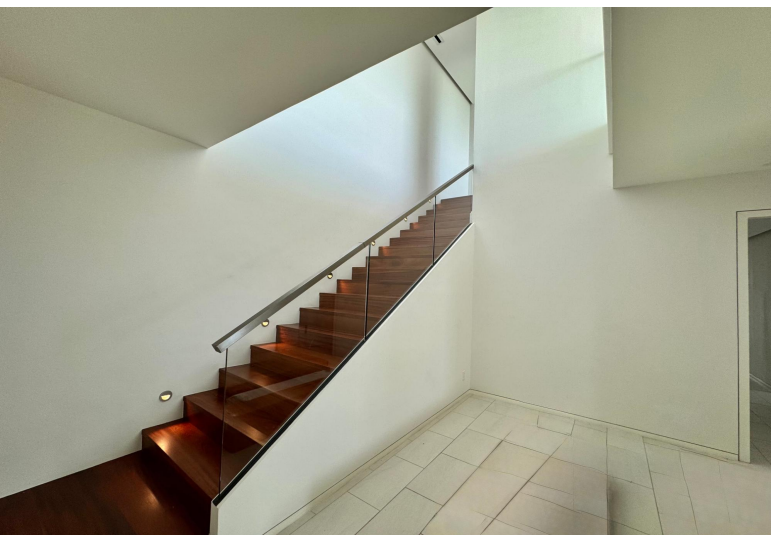


PARADISE ISLAND DRIVE, Paradise Island, New Providence/



A truly rare find, this impressive penthouse boasts 5,075 sq. ft. across two magnificent stories,...

A truly rare find, this impressive penthouse boasts 5,075 sq. ft. across two magnificent stories, offering an exquisite living experience. This private oasis features 4 spacious bedrooms and 5.5 lavish bathrooms, meticulously designed with high-end modern appliances and exquisite finishes to create a sophisticated and stylish ambiance throughout. Gaze upon breathtaking, expansive views from nearly every room, thanks to floor-to-ceiling glass impact windows and doors that perfectly frame the glistening ocean, the lush fairways of the Ocean Club Golf Course, and stunning Bahamian sunsets. Residents enjoy exclusive access to a state-of-the-art gym and a pristine private pool. The convenience of nearby Atlantis and Four Seasons resorts means fine dining, luxury shopping, and endless entertainm...read more on our website.

Bedrooms: 4

Bathrooms: 5

Lot Size: 5075

Subdivision: Paradise Island

Features: 24 Hour

Security, Furnished, Golf Course Nearby, Harbour, Kitchen Built-in(s), Marina Nearby, Night Security, Recreation Nearby, Shopping Nearby, View - Ocean

One Ocean PARADISE ISLAND
DRIVE, Paradise Island, New
Providence/Paradise Island

Phone:



\$20,000 ID# M62817 [View Online](#)
www.sarlesrealty.com