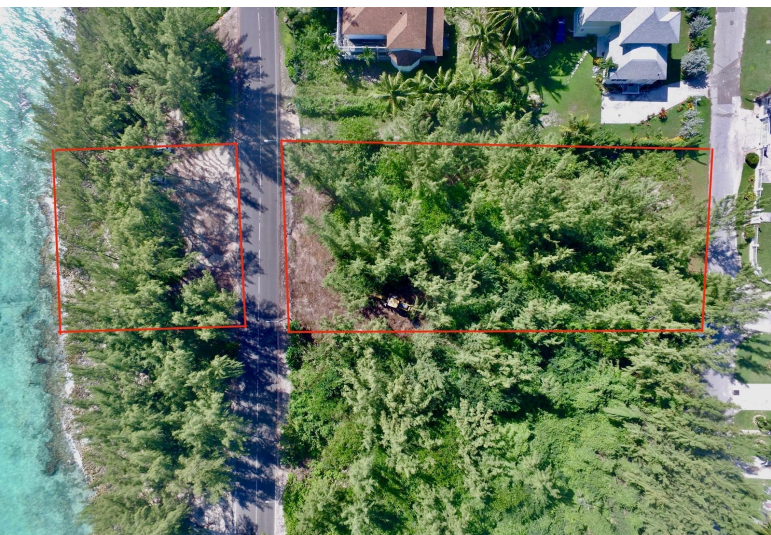


HEIGHTS WATERFRONT, Yamacraw, New Providence/Paradise Island



An investor's dream! Take advantage of this rare waterfront opportunity located in the...

An investor's dream! Take advantage of this rare waterfront opportunity located in the eastern district of New Providence. There are (2) lots - Lot 8 and Lot 8A totaling 34,382 sq ft. Lot 8A measures 9,535 sq ft and sits right on the water, perfect for recreational activities such as swimming, kayaking, BBQs and much more. Directly across the road is Lot #8 which measures 24,847 sq ft and runs from road to road providing multiple access points creating great potential for further development of the land. A home built on this lot will enjoy water access and unobstructed views of the sunrise along with the exceptional colors of the ocean. Conveniently located just minutes away from schools, shopping centers, food stores and Palm Cay. Don't miss this opportunity to own a piece of the paradise...read more on our website.

Bedrooms: 0
Bathrooms: 0
Lot Size: 34382
Subdivision: Yamacraw
Features: Easy Access,
None, Private Setting,
Quiet Area, Recreation
Nearby, Road - Paved,
Treed Lot, View - Ocean,
Waterfront - Ocean

TWYNAM HEIGHTS
WATERFRONT, Yamacraw, New
Providence/Paradise Island

Phone:



\$360,000 ID# M62807 [View Online](#)
www.sarlesrealty.com