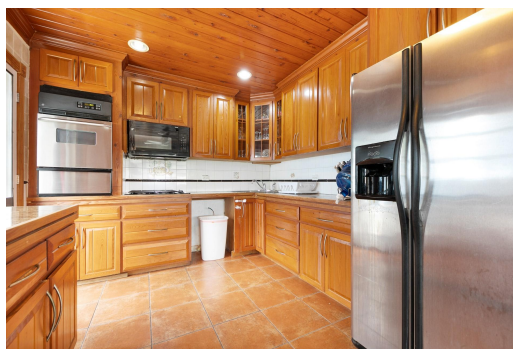
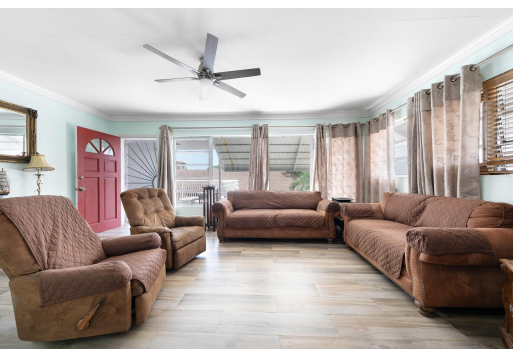


K NEAR PALMDALE, Mackey Street, New Providence/Paradise



This multi-family property is an excellent opportunity as a commercial investment in a central...

This multi-family property is an excellent opportunity as a commercial investment in a central location. Featuring five bedrooms and six bathrooms, the traditional Bahamian home lies on the upper floor while a one-bedroom apartment and an efficiency are on the ground floor. The home has been recently updated with modern flooring and is open and spacious with multiple large windows in the living, dining and kitchen areas. There is an ensuite primary bedroom, a shared bathroom and two other sizeable rooms. On the exterior, a spacious patio leads to the rear of the property, boasting a newly resurfaced 30 ft pool with a concrete deck and the remaining bathrooms. The property is located in Twynam, walking distance to Mackey Street, Palmdale and Paradise Island and is a gateway to eastern Ne...read more on our website.

Bedrooms: 5
Bathrooms: 6
Lot Size: 5940
Subdivision: Mackey Street
Features: Can Be Rented, Central location, Family Oriented, Fully Fenced, Highway Access, Pets Allowed, Road - Paved, Shopping Nearby, Swimming Pool

TRIPLEX NEAR PALMDALE,
Mackey Street, New
Providence/Paradise Island
Phone:



\$540.000 ID# M62808 View Online
www.sarlesrealty.com