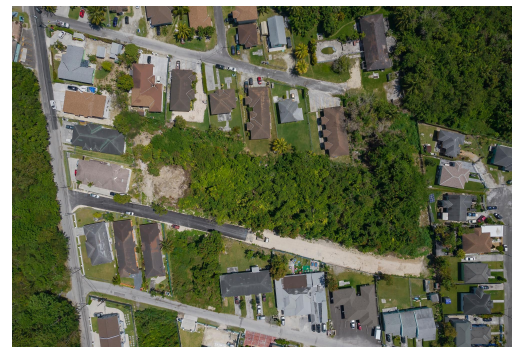
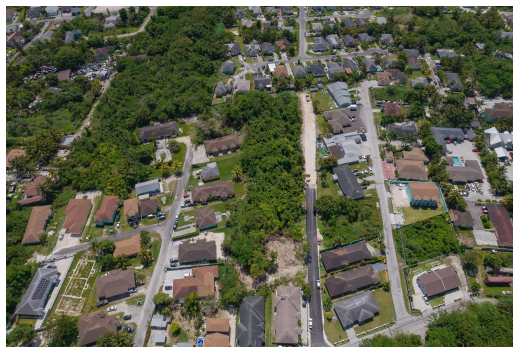
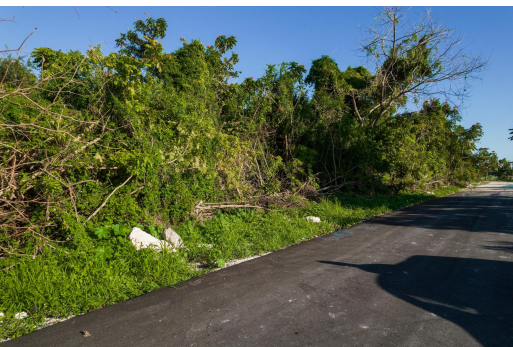


BELLOT ROAD, Gladstone Road, New Providence/Paradise Isl



Discover an exceptional investment opportunity in Western Nassau. This spacious multi-family lot...

Discover an exceptional investment opportunity in Western Nassau. This spacious multi-family lot presents endless possibilities for astute or beginning investors. The lot offers 14,175 square feet of prime real estate, ripe for development. Whether you're envisioning a modern apartment complex or townhomes, this versatile lot is the perfect foundation for your vision. Lot G can also be combined with the adjacent Lot H for a total of 29,559 square feet, creating an ideal footprint for a larger-scale condo or townhouse development. This unique option significantly expands your development potential and enhances the property's value. Bellot Road is conveniently located near a wide range of shopping, schooling, entertainment, and dining optionsâ€”making it highly attractive for community livin...read more on our website.

Bedrooms: 0

Bathrooms: 0

Lot Size: 14175

Subdivision: Gladstone Road

BELLOT ROAD, Gladstone Road,
New Providence/Paradise Island

Phone:

Features: Can Be Rented,
None, Shopping Nearby



\$260.000 ID# M62778 [View Online](#)
www.sarlesrealty.com