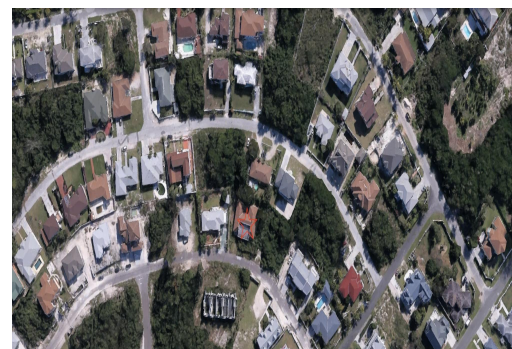
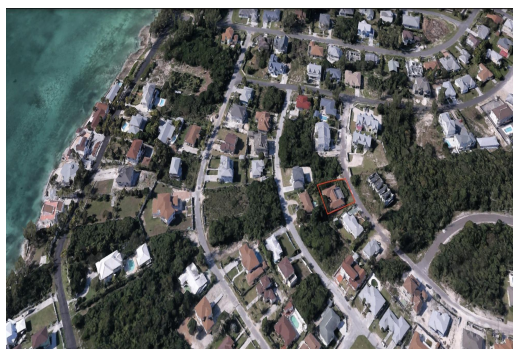


TWYNAM HEIGHTS BLVD, Yamacraw, New Providence/Paradise



Are you ready to settle down and grow with your family? Then this home in Twynam Heights is perfect...

Are you ready to settle down and grow with your family? Then this home in Twynam Heights is perfect for you! This split level home boasts of the amenities any growing family needs, inclusive of a large yard with numerous fruit trees, large back patio, and a garage. This 3 bed, 2 ½ bath home is located in the heart of Twynam Heights, which is in walking distance to the grocery store and beach....read more on our website.

Bedrooms: 3
Bathrooms: 2
Lot Size: 9271
Subdivision: Yamacraw
Features: Adult Oriented,
Family Oriented, Low
Maint Yard, None, Quiet
Area, Road - Paved,
Shopping Nearby

TWYNAM HEIGHTS BLVD,
Yamacraw, New
Providence/Paradise Island
Phone:



\$335,000 ID# M62643 [View Online](#)
www.sarlesrealty.com