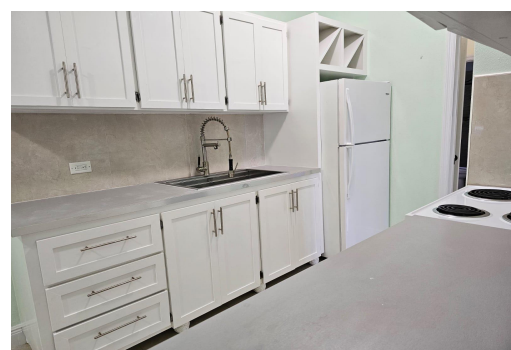
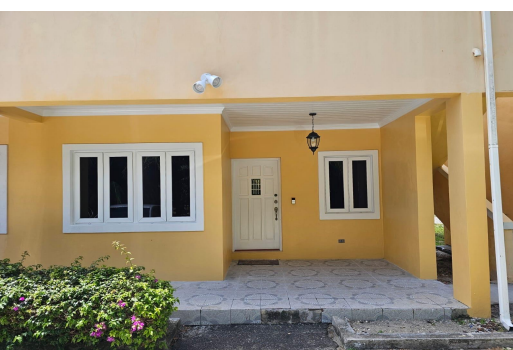


CORAL PALM CONDOMINIUMS, Prince Charles Drive, New Providence



Nestled just off Prince Charles Drive in the desirable Nassau East area, Unit 4 of Coral Palm...

Nestled just off Prince Charles Drive in the desirable Nassau East area, Unit 4 of Coral Palm Condominiums offers the perfect blend of comfort and convenience. This charming 1-bedroom, 1-bath condo boasts a thoughtfully designed 562 sq. ft. interior complemented by a cozy 50 sq. ft. porch—ideal for enjoying quiet mornings or evening breezes. Tastefully laid out with a modern touch, the unit features impact windows, sleek finishes, and a functional layout that maximizes every square foot....read more on our website.

Bedrooms: 1

Bathrooms: 1

Lot Size: 612

Subdivision: Prince

Charles Drive

Features: Impact Windows

CORAL PALM CONDOMINIUMS,
Prince Charles Drive, New
Providence/Paradise Island
Phone:



\$209,000 ID# M62284 [View Online](#)
www.sarlesrealty.com