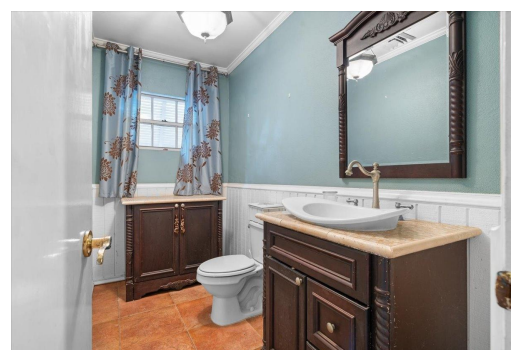
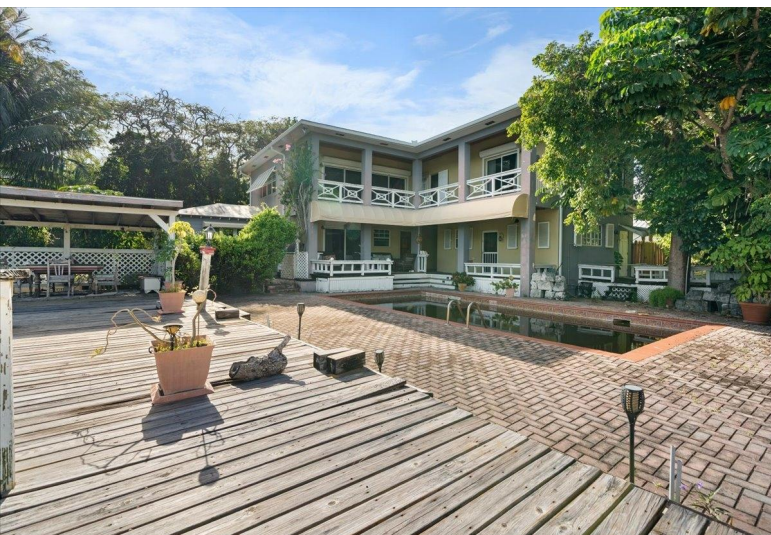


# EASTERN ROAD, Eastern Road, New Providence/Paradise I



## **Charming Family Home, with gated entry, 2-Storey, 3 Bedr, 3 Baths, 3150 sq ft., plus 650 sq ft...**

Charming Family Home, with gated entry, 2-Storey, 3 Bedr, 3 Baths, 3150 sq ft., plus 650 sq ft covered porches/ balconies to enjoy ocean views. Colonial style and roll down shutters, well- constructed with concrete block, asphalt roof, pool with stone patio and cabana. Sold unfurnished. The gated entry from Eastern Rd provides access by 14ft wide driveway to the Single Storey, 1535 sq ft garage. Waterfront 2-Storey bldg. has 3268 sq ft, plus, 1538 sq ft porch with a 2 bed, 2 bath apartment, tiled floors, wooden ceilings per floor and an Efficiency Unit, plus Boat Storage room. All buildings are of good construction and need masonry work. The concrete seawall, wooden dock and boat basin with a breakwater are a boater's dream! Bonus, 18,518 sq ft lot, with lawns and mature trees, runs along...read more on our website.

Bedrooms: 8  
Bathrooms: 8  
Lot Size: 45997  
Subdivision: Eastern Road  
Features: Acreage, Adult Oriented, Appliances Only, Cable, Can Be Rented, Central location, Dock, Easy Access, Family Oriented, Fuel to Lot, Fully Fenced, Fully Walled, Garden Area, Highway Access, Hurricane Windows, Impact Shutters, Landscaped, Main Level Entry, Marina Nearby, Park setting, Pets Allowed, Private Setting, Quiet Area, Recreation Nearby, Road - Paved, Roll Down Shutters, Seniors Oriented,

EASTERN ROAD, Eastern Road, I

Shopping Nearby,  
Southern Exp, Stand-by  
Generator, Swimming  
Pool, Underground  
Services, Unfurnished,  
View - Ocean, Waterfront  
- Ocean, Wkshop -  
Detached, Wooded Area

ence/Paradise I

294 EASTERN ROAD, Eastern  
Road, New Providence/Paradise  
Island  
Phone:



**\$1.650,000 ID# M62490** [View Online](#)  
**[www.sarlesrealty.com](http://www.sarlesrealty.com)**