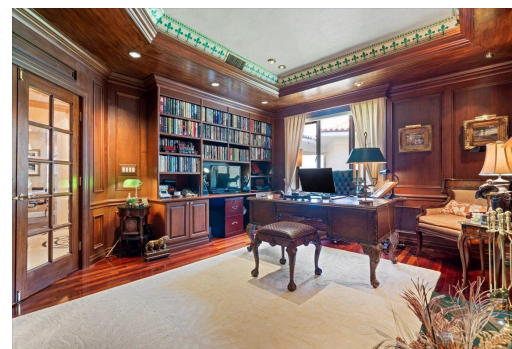
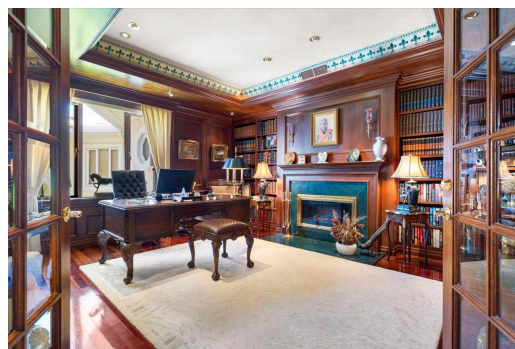
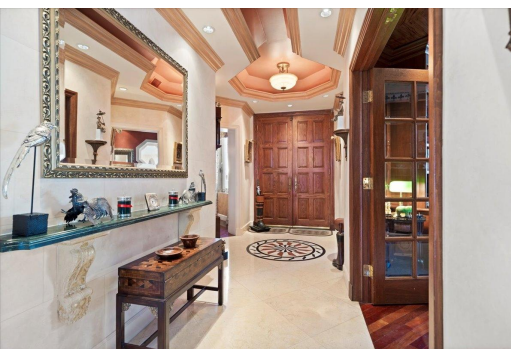


CLOISTER DRIVE EAST, Paradise Island, New Providence/Paradise



This rare-to-market, two story, penthouse has been completely renovated and exceptionally...

This rare-to-market, two story, penthouse has been completely renovated and exceptionally maintained. The expansive home covers over 3,100sqft of interior area with another 250sqft balcony with ocean views. The home features 3 en-suite bedrooms, a large study, and a multipurpose entertaining area with a bar and pool table. Marble floors, hand painted decorative ceilings and trims, custom furniture and millwork, upgraded lighting, outdoor kitchen & bbq, and top-of-the-line AV equipment are just a few of the many notable upgrades done to the unit. The home also includes 1 covered and 1 uncovered carpark, 1 covered golfcart parking spot, and an air-conditioned storage unit, with an additional optional rental unit. A car and golfcart are also included in the sale. The development features a la...read more on our website.

Bedrooms: 3
Bathrooms: 4
Lot Size: 3350
Subdivision: Paradise Island
Features: 24 Hour Security, Fully Walled, Furnished, Hurricane Windows, Impact Shutters, Main Level Entry, Night Security, Stand-by Generator, Swimming Pool

CLOISTER DRIVE EAST,
Paradise Island, New
Providence/Paradise Island

Phone:



\$2.795,000 ID# M62395 [View Online](#)
www.sarlesrealty.com