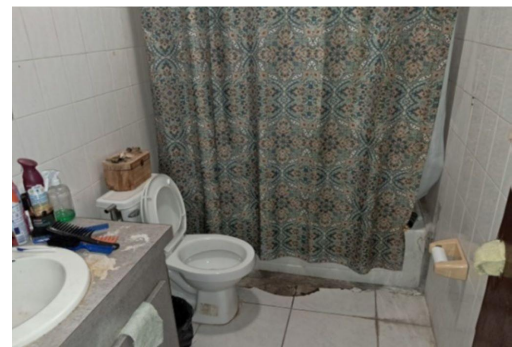
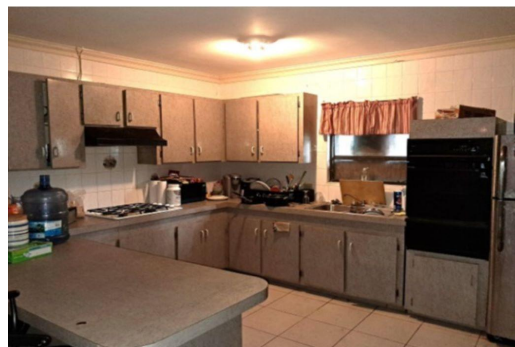
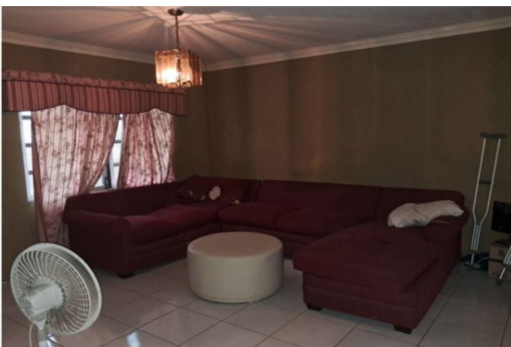


VILLAS CONDOMINIUM, West Bay Street, New Providence



Discover a charming and well-maintained condo nestled within the serene St. Albans Drive. Located...

Discover a charming and well-maintained condo nestled within the serene St. Albans Drive. Located in a quiet, family-friendly neighborhood in the Western District, this welcoming condo offers both comfort and convenience. Enjoy easy access to nearby shops, restaurants, schools, and public transportation. This tranquil property presents a wonderful opportunity for first-time homebuyers seeking a peaceful retreat. Please note that this listing is currently under the Home Owner's Protection Act (HOPA), and interior access will not be available for 6 months....read more on our website.

Bedrooms: 2
Bathrooms: 2
Lot Size: 904
Subdivision: West Bay
Street
Features: Fully Walled

29A ALBANY VILLAS
CONDOMINIUM, West Bay
Street, New Providence/Paradise
Island
Phone:



\$115.000 ID# M60977 [View Online](#)
www.sarlesrealty.com