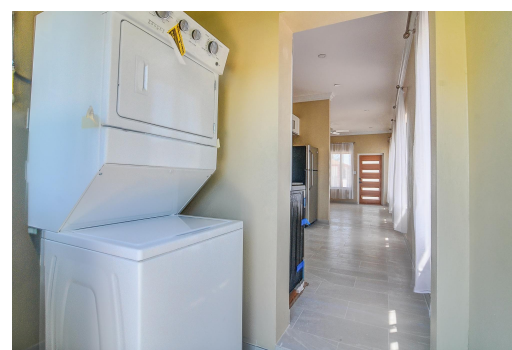
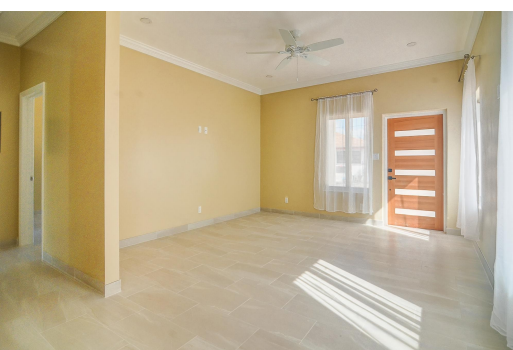


BLLENHEIM ROAD, Stapledon Gardens, New Providence/Paradise



Discover this newly built 2-bedroom, 1-bathroom rental in the peaceful and family-friendly...

Discover this newly built 2-bedroom, 1-bathroom rental in the peaceful and family-friendly community of Stapledon Gardens. This modern unit features brand-new kitchen appliances and a washer & dryer, offering convenience and comfort. Located just a short walk from the community park, residents can enjoy green spaces and a serene atmosphere. Stapledon Gardens is known for its quiet, safe, and family-oriented environment, making it an ideal place to call home. Don't miss this opportunity to live in a welcoming neighborhood with easy access to essential amenities....read more on our website.

Bedrooms: 2
Bathrooms: 1
Lot Size: 0
Subdivision: Stapledon Gardens
Features: Appliances Only, Family Oriented, Kitchen Built-in(s), Low Maint Yard, Quiet Area, Recreation Nearby, Shopping Nearby

BLLENHEIM ROAD, Stapledon Gardens, New Providence/Paradise Island
Phone:



\$2,400 ID# M61733 [View Online](#)
www.sarlesrealty.com