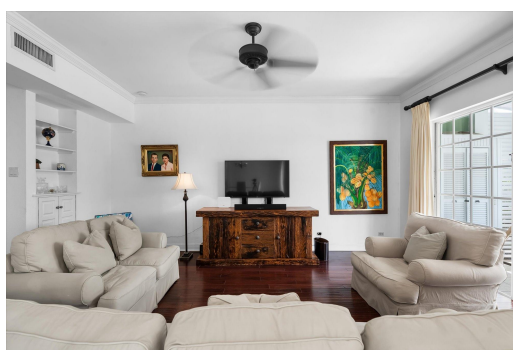


CLIPPER ISLAND, West Bay Street, New Providence/Paradise



Situated in the sought-after, gated community of Sandyport, this spacious 3-story corner townhome...

Situated in the sought-after, gated community of Sandyport, this spacious 3-story corner townhome offers exceptional light, added outdoor space, and a layout that is ideal for both families and investors. As a corner unit, it enjoys more windows, beautiful views, and rare side yard access. The main floor features an open-concept living and dining area that flows into a functional kitchen with generous cabinetry. A private patio extends from the living area, perfect for entertaining or relaxing. Upstairs on the second level, you will find two generously sized bedrooms ensuite bathrooms and a balcony, ideal for kids, guests, or rental potential. The entire third floor is reserved for the primary suite, offering separation from the rest of the home, a full bath, and serene views of the commun...read more on our website.

Bedrooms: 3

Bathrooms: 3

Lot Size: 2445

Subdivision: West Bay Street

Features: 24 Hour

Security, Dock, Stand-by Generator

16 CLIPPER ISLAND, West Bay Street, New Providence/Paradise Island
Phone:



\$1,300,000 ID# M62164 [View Online](#)
www.sarlesrealty.com