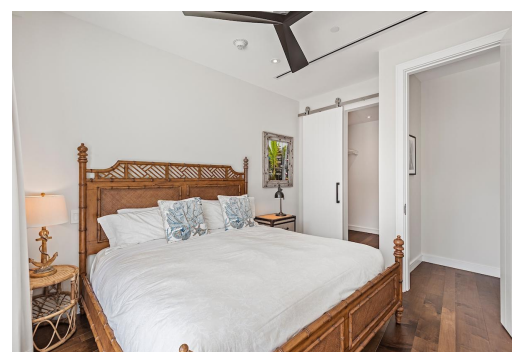
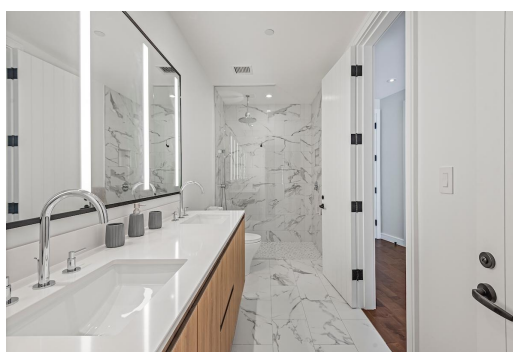
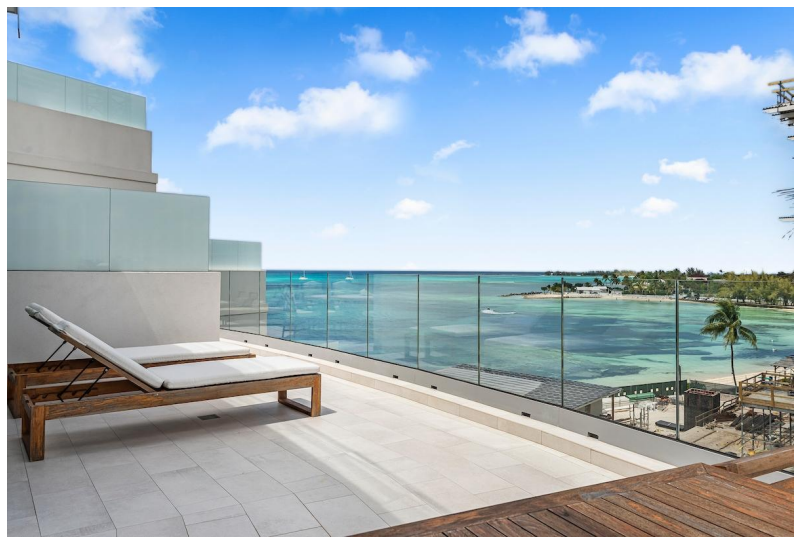


GOLDWYNN, West Bay Street, New Providence/Paradise Island



Experience elevated island living in this stunning 2-bed, 2-bath combined condo, Units 428 and 429,...

Experience elevated island living in this stunning 2-bed, 2-bath combined condo, Units 428 and 429, at the exclusive Goldwynn Resort and Residences. Situated on the eastern side of the building, this 1,502 sq. ft. turnkey furnished home offers mesmerizing sunrises and partial ocean views through floor-to-ceiling impact glass windows and doors. The bright, open-concept layout features sleek finishes, high-end appliances, and a cozy living area. Both bedrooms open onto a private, furnished terrace—perfect for relaxing or entertaining. Ideal as a full-time residence, vacation getaway, or investment, this luxury condo also qualifies for Bahamian Permanent Residency. Goldwynn offers 24-hour security and world-class amenities including infinity and rooftop pools, beach access, Rhizophora Spa, ...read more on our website.

Bedrooms: 2

Bathrooms: 2

Lot Size: 0

Subdivision: West Bay Street

GOLDWYNN, West Bay Street,
New Providence/Paradise Island

Phone:

Features: 24 Hour
Security, Beach Front,
Furnished, Golf Course
Nearby, Impact Windows,
Kitchen Built-in(s),
Landscaped, Recreation
Nearby, Road - Paved,
Shopping Nearby,
Stand-by Generator,
Swimming Pool, View -
Ocean, Waterfront -
Ocean



\$1.420,000 ID# M62147 [View Online](#)
www.sarlesrealty.com