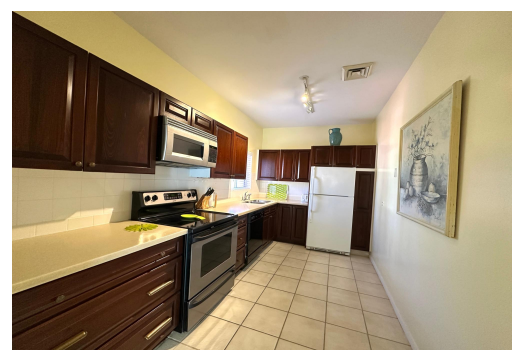


BAY VIEW DRIVE, Paradise Island, New Providence/Paradise Island



Bay View Village is one of the most sought after investment properties on Paradise Island with many...

Bay View Village is one of the most sought after investment properties on Paradise Island with many desirable amenities including three swimming pools, a tennis court with lights as well as a snack bar and grill. Within walking distance of a spectacular beach, Atlantis and Marina Village, this property enjoys a prime location! The two bedroom, two bath villa style condo is superbly located adjacent to the large swimming pool. A wonderful patio with awning shaded area for dining welcomes you to this attractive villa on Paradise Island. Tastefully decorated in a sophisticated tropical style, this villa is sure to appeal. When not grilling outside on the spacious, fully enclosed patio, the spacious kitchen with dark woods and stainless appliances is a great alternative. The master suite is a ...read more on our website.

Bedrooms: 2

Bathrooms: 2

Lot Size: 0

Subdivision: Paradise Island

Features: Fully Fenced,
Furnished, Gated

Community, Golf Course

Nearby, Marina Nearby,

Quiet Area, Southern Exp,

Swimming Pool

BAY VIEW DRIVE, Paradise
Island, New Providence/Paradise
Island
Phone:



\$495.000 ID# M62027 [View Online](#)
www.sarlesrealty.com