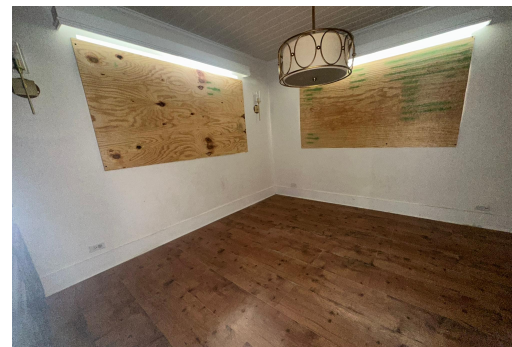
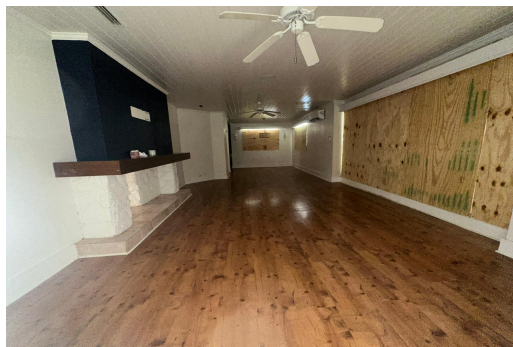


# DODGE ROAD, Eastern Road, New Providence/Paradise Island



## **This charming fixer-upper boasts a spacious 4-bedroom, 3-bathroom layout with an open floor plan...**

This charming fixer-upper boasts a spacious 4-bedroom, 3-bathroom layout with an open floor plan that seamlessly connects the kitchen and an oversized family room, perfect for entertaining. The large, airy kitchen offers plenty of potential for renovation, while the expansive family room provides ample space for family gatherings and relaxation. Outside, the property features a private pool and a beautiful garden filled with fruit trees, offering a tranquil setting to unwind and enjoy nature's bounty. With a little TLC, this home is ready to become a stunning dream property!...read more on our website.

Bedrooms: 4

Bathrooms: 3

Lot Size: 18231

Subdivision: Eastern Road

Features: Fully Fenced,

Garden Area, Swimming

Pool

17 DODGE ROAD, Eastern

Road, New Providence/Paradise

Island

Phone:



**\$458.000 ID# M61973** [View Online](#)  
[www.sarlesrealty.com](http://www.sarlesrealty.com)