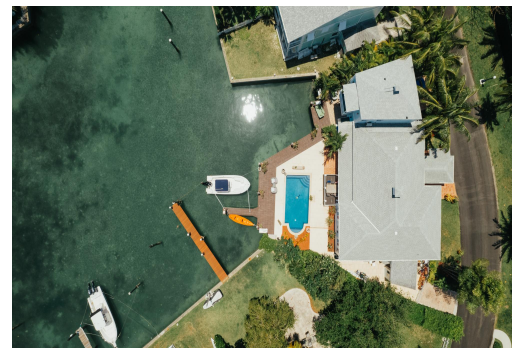


SANDYPORT DRIVE, NASSAU,, West Bay Street, New Providence/Paradise Island



One of the only single story homes in Sandyport, this well positioned cottage has expansive views...

One of the only single story homes in Sandyport, this well positioned cottage has expansive views of the canal and over 90 feet of dockage. This rare find in Sandyport has wood floor throughout, granite counter tops, high quality fixtures and stainless steel appliances in a large spacious kitchen. The outside features an outdoor dining area, bar and ample space around the pool for entertaining. Property comes equipped with standby generator to power entire home, hurricane impact windows, was recently renovated. The family friendly community of Sandyport also features 24-hour gated security, pools, tennis courts and children's playgrounds, and bank, gym, restaurants and Tambearly School nearby...read more on our website.

Bedrooms: 3
Bathrooms: 3
Lot Size: 5500
Subdivision: West Bay Street
Features: 24 Hour Security, Canal Front, Dock, Furnished, Garden Area, Gated Community, Golf Course Nearby, Hurricane Windows, Kitchen Built-in(s), Marina Nearby, Pets Allowed, Recreational, Shopping Nearby, Stand-by Generator, Swimming Pool

SANDYPORT DRIVE, NASSAU,,
West Bay Street, New
Providence/Paradise Island
Phone:



\$7,000 ID# M62076 [View Online](#)
www.sarlesrealty.com