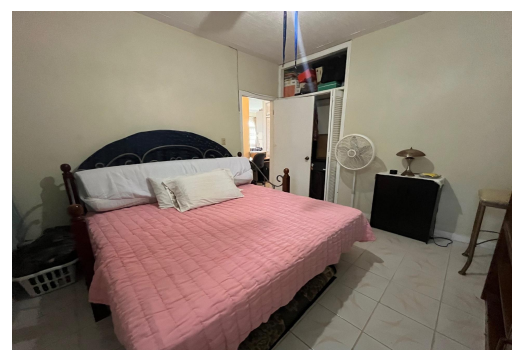
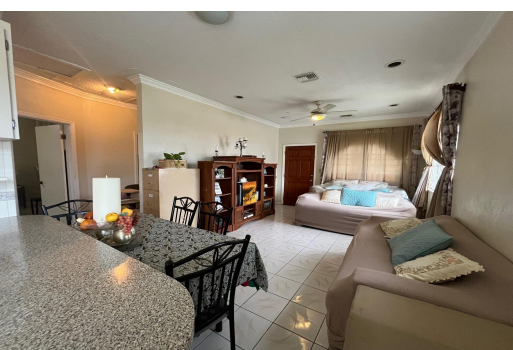


# SUNGLOW ROAD, Prince Charles Drive, New Providence/Paradise Island



## Discover this fantastic investment opportunity in the desirable Colony Village! This...

Discover this fantastic investment opportunity in the desirable Colony Village! This well-maintained duplex is situated on a shared lot with another duplex. It is two separate properties making it ideal for rental income and has a pond with birds at the rear of the lot. Front Unit: - Bedrooms: 2 - Bathrooms: 2 - Spacious living area with natural light - Kitchen with ample storage - Outdoor space perfect for relaxation Rear Unit: - Bedrooms: 1 - Bathrooms: 1 - Cozy layout with open-plan living Highlights: - Prime location near amenities such as schools, grocery stores, public transportation - Excellent potential for rental income - Well-maintained exterior and landscaping - Ample parking space available Don't miss out on this exceptional opportunity to own a duplex in a sought-after neighborhood...read more on our website.

Bedrooms: 3  
Bathrooms: 3  
Lot Size: 5462  
Subdivision: Prince Charles Drive  
Features: Can Be Rented, Easy Access, Family Oriented, Highway Access, Landscaped, None, Quiet Area, Recreation Nearby, Road - Paved, Shopping Nearby

48 SUNGLOW ROAD, Prince Charles Drive, New Providence/Paradise Island  
Phone:



**\$325,000 ID# M61544** [View Online](#)  
[www.sarlesrealty.com](http://www.sarlesrealty.com)