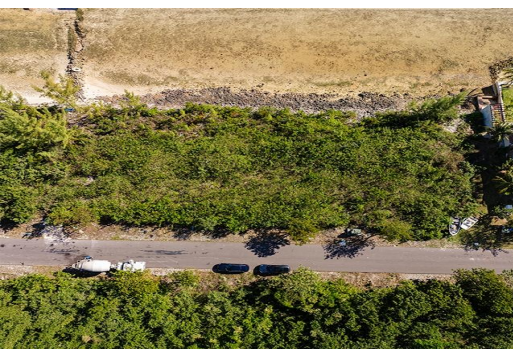
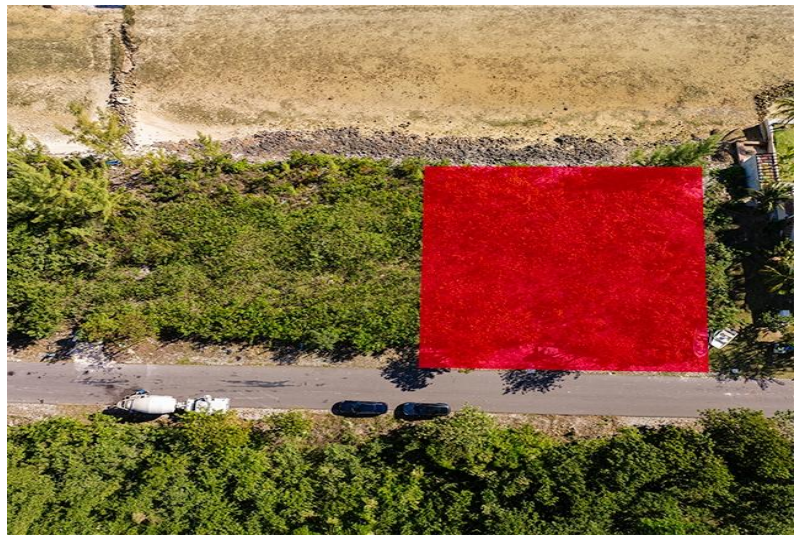


SOUTH SEAS ESTATES, Bacardi Road, New Providence/Paradise



**Beachfront lots in New Providence are in high demand and limited supply.
Welcome to the established...**

Beachfront lots in New Providence are in high demand and limited supply. Welcome to the established South Seas community, where you are invited to envision building your dream home along the serene southwestern coast. This gated neighborhood offers direct beach access, along with convenient canal and marina facilities. Additionally, you'll be just a short distance from shopping, schools, the airport, and all modern amenities. Lots 54 and 55, conveniently located side by side, can be purchased separately or combined for a larger estate. Don't miss this unique chance to own a piece of beachfront paradise....read more on our website.

Bedrooms: 0
Bathrooms: 0
Lot Size: 11200
Subdivision: Bacardi Road
Features: 24 Hour
Security, Additional
Accom., Bed & Breakfast,
Dock, Fully Walled, Garden Area,
Main Level Entry, Night
Security, Security System,
Short Term Allowed,
Unfurnished

SOUTH SEAS ESTATES,
Bacardi Road, New
Providence/Paradise Island
Phone:



\$299,000 ID# M60829 [View Online](#)
www.sarlesrealty.com