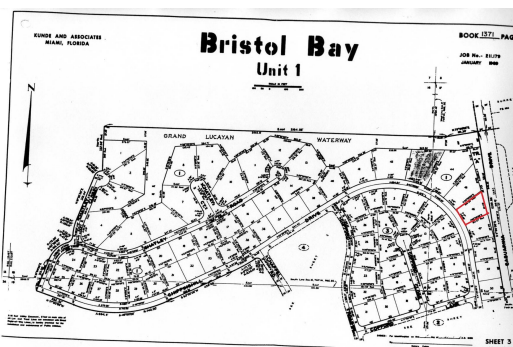


MULTI FAMILY BRISTOL BAY, Bristol Bay, Grand Bahama/Fre



This spacious multi-family lot is .51 acre and backs onto Casuarina Drive with the front entrance...

This spacious multi-family lot is .51 acre and backs onto Casuarina Drive with the front entrance located on Chippinghill Drive in the growing community of Bristol Bay. Property has canal access via a green way and is located only 10 minutes from the Port Lucaya marketplace, hotels and grocery stores. Also minutes away from Lucaya International School and the airport. This is an ideal investment opportunity for the forward looking individual who anticipates ongoing development in the area. This property offers an excellent location complete with paved roads and all utilities....read more on our website.

Bedrooms: 0

Bathrooms: 0

Lot Size: 22216

Subdivision: Bristol Bay

Features: Easy Access,
Family Oriented, Highway
Access, None, Pets
Allowed, Quiet Area,
Road - Paved, Treed Lot

MULTI FAMILY BRISTOL BAY,
Bristol Bay, Grand
Bahama/Freeport
Phone:



\$35,000 ID# M60978 [View Online](#)
www.sarlesrealty.com