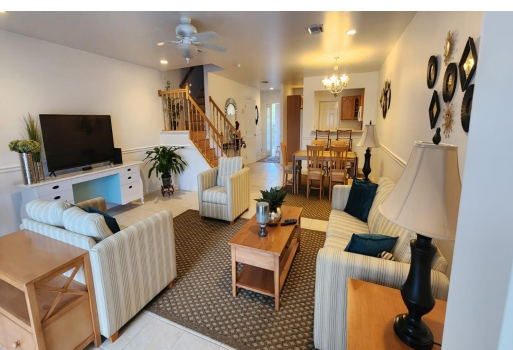


SEAVIEW DRIVE, West Bay Street, New Providence/Paradise Island



Nautica is a beautiful, well-kept gated community conveniently located off West Bay Street and...

Nautica is a beautiful, well-kept gated community conveniently located off West Bay Street and within walking distance to Cable Beach. This meticulously maintained 2,300 sq. ft. townhouse boasts three bedrooms, two and a half bathrooms, a single-car garage, and an enclosed back deck, just a short distance from one of the two community pools. This tastefully furnished townhouse includes a fully equipped kitchen with granite countertops, stainless steel appliances and tile flooring throughout the ground floor. Additionally, there is an upstairs laundry room with a full-size washer and dryer, a spacious primary bedroom complete with a walk-in closet and ensuite bathroom, as well as central air conditioning. Community amenities also include a pond, a children's playground, and green spaces. Re...read more on our website.

Bedrooms: 3

Bathrooms: 2

Lot Size: 0

Subdivision: West Bay Street, New Providence/Paradise Island

Features: Can Be Rented,

Central location, Easy

Access, Family Oriented,

Furnished, Gated

Community, Golf Course

Nearby, Jetted Bathtub,

Landscaped, Pets

Allowed, Quiet Area,

Recreation Nearby,

Shopping Nearby,

Swimming Pool



\$3.800 ID# M60999 [View Online](#)
www.sarlesrealty.com