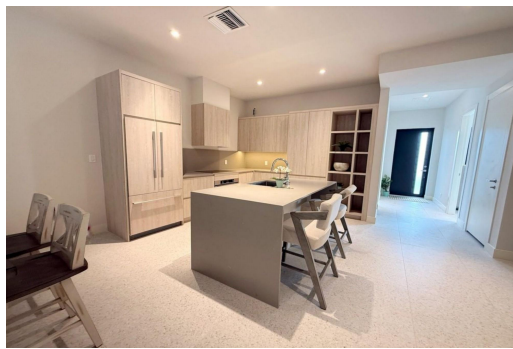
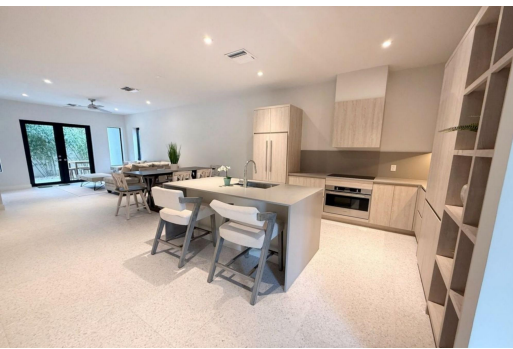


A4 WESTEND, Love Beach, New Providence/Paradise Island



Discover the perfect blend of style and convenience at Westend. This spacious 3-bedroom, 2-bathroom...

Discover the perfect blend of style and convenience at Westend. This spacious 3-bedroom, 2-bathroom unit spans 1,327 sq. ft., offering modern living in one of the most desirable communities. Designed for both comfort and functionality, this thoughtfully crafted residence features a versatile den, ideal for a home office, creative space, or cozy retreat. Westend is more than just a home; it's a lifestyle. Unwind by one of the two sparkling pools, stay active in the private gym, and enjoy the peace of mind that comes with 24-hour security. The development is well-maintained with dedicated on-site staff, while impact-resistant windows, doors, and a generator hookup ensure extra security and convenience. Perfectly positioned just minutes from top schools, grocery stores, and the internationa...read more on our website.

Bedrooms: 3

Bathrooms: 2

Lot Size: 0

Subdivision: Love Beach

Features: 24 Hour

Security, Fully Fenced,

Stand-by Generator,

Swimming Pool

A4 WESTEND, Love Beach, New

Providence/Paradise Island

Phone:



\$5.800 ID# M61497 [View Online](#)
www.sarlesrealty.com