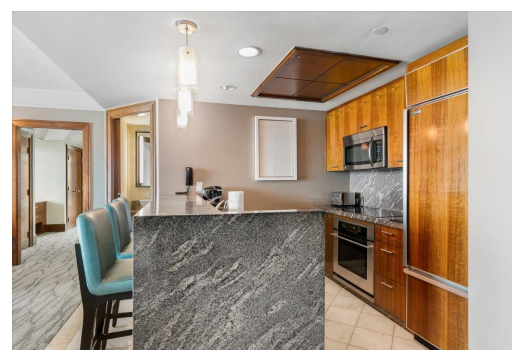
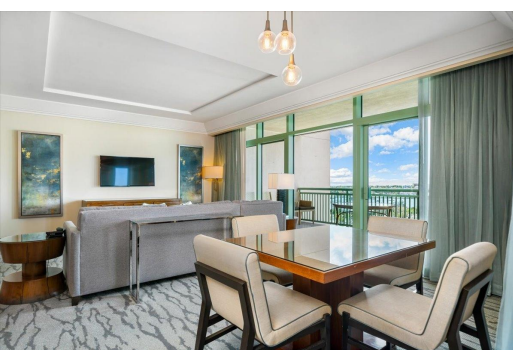


# REEF AT ATLANTIS, Paradise Island, New Providence/Paradise



## Unit 20-905/907 at The Reef at Atlantis stands among the finest within the building of 495 units....

Unit 20-905/907 at The Reef at Atlantis stands among the finest within the building of 495 units. This exceptional 1,502 sq. ft., 2-bed, 3-bath condo is a double lock-off unit featuring a spacious double-wide balcony, ideal for sunbathing or al fresco dining. Positioned on the 20th floor and facing the ocean/island side of the Reef Tower, this residence offers views of Dolphin Cay and stunning vistas of Nassau Harbour, the Paradise Island Bridges, and Paradise Beach. From sunrise to sunset, guests can observe the activity of cruise ships and luxury yachts, and enjoy the enchanting nighttime scenes and city lights from the comfort of their own balconies. Ideal for larger families, this unit is equipped with a full kitchen, washer and dryer, and an additional kitchenette, providing convenien...read more on our website.

Bedrooms: 2  
Bathrooms: 3  
Lot Size: 1502  
Subdivision: Paradise Island  
Features: 24 Hour Security, Cable, Easy Access, Furnished, Garden Area, Golf Course Nearby, Hurricane Windows, Kitchen Built-in(s), Landscaped, Marina Nearby, No Pets, Recreation Nearby, Shopping Nearby, Sprinkler System, Swimming Pool

THE REEF AT ATLANTIS,  
Paradise Island, New  
Providence/Paradise Island  
Phone:



**\$1.150,000 ID# M61084** [View Online](#)  
[www.sarlesrealty.com](http://www.sarlesrealty.com)