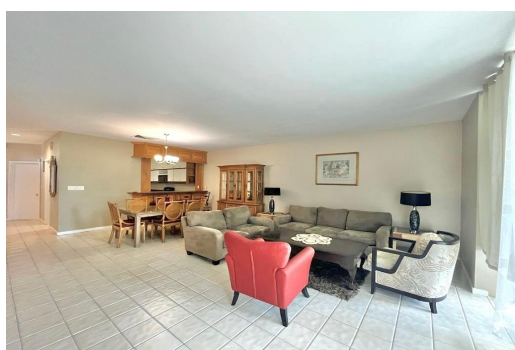


DICKSON POINT, Eastern Road, New Providence/Paradise Island



Set in the centrally located waterfront, gated community of Dicks Point Close, off the Eastern Road...

Set in the centrally located waterfront, gated community of Dicks Point Close, off the Eastern Road this 2 bedroom, 2.5 bathroom townhome features an open floor plan that extends onto a lovely covered patio offering sea views and sweet ocean breeze coming in from the east. Ideal for Morning Coffee or Sunset Cocktails. The second floor has two ensuite bedrooms following to the spacious primary suite which has an expansive uncovered balcony with beautiful sea and sunrise views to the East. Amenities of Dicks Point Close include designated boat dockage, a tennis court, a community pool, and gated 24-hour security. Dicks Point is ideally located minutes from Downtown, The Stores and Shops at Harbour Bay, Montague Corporate Center and Paradise Island. Comes available May 1st....read more on our website.

Bedrooms: 2
Bathrooms: 2
Lot Size: 0
Subdivision: Eastern Road
Features: 24 Hour Security, Furnished, Gated Community, Kitchen Built-in(s), Marina Nearby, Potential Recreation, Quiet Area, Recreation Nearby, Shopping Nearby, Swimming Pool, View - Ocean, Waterfront - Ocean

DICKSON POINT, Eastern Road, New Providence/Paradise Island
Phone:



\$3,000 ID# M61316 [View Online](#)
www.sarlesrealty.com