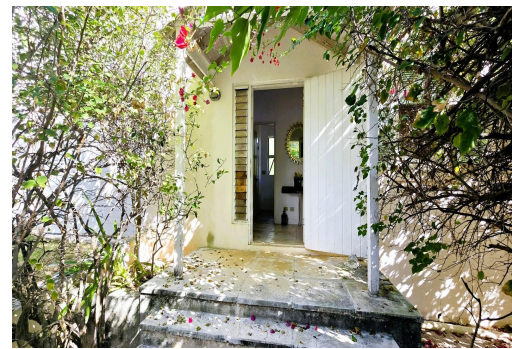


BANKS ROAD, Double Bay, Eleuthera



A Rare Opportunity! Charming 2-Bedroom Guest House on Expansive Acreage â€“ Nestled on a sprawling...

A Rare Opportunity! Charming 2-Bedroom Guest House on Expansive Acreage â€“ Nestled on a sprawling 3.6 Acre property, this 2-bedroom, 2.5-bathroom guest house offers a unique opportunity to own a piece of paradise while planning and building your dream home. Designed with foresight, the guest house serves as a comfortable and functional dwelling, allowing you to reside on-site as you develop the centerpiece of the estate. Positioned to capture breathtaking northeast-facing sunrise views over the end of the beach, this home offers a serene and picturesque backdrop each morning. With spacious living areas, large windows, extensive porch, the residence is ready for a modern update, giving you the perfect canvas to customize it to your liking. The propertyâ€™s layout ensures privacy, security,...read more on our website.

Bedrooms: 2
Bathrooms: 2
Lot Size: 156903
Subdivision: Double Bay
Features: Acreage, Adult Oriented, Beach Front, Can Be Rented, Central location, Easy Access, Family Oriented, Furnished, Garden Area, Guest House, Highway Access, No Thru Road, Private Setting, Quiet Area, Recreation Nearby, Road - Gravel, Rural Setting, Shopping Nearby, Treed Lot, View - Ocean, Waterfront - Ocean

BANKS ROAD, Double Bay,
Eleuthera
Phone:



\$2,500,000 ID# M61674 [View Online](#)
www.sarlesrealty.com