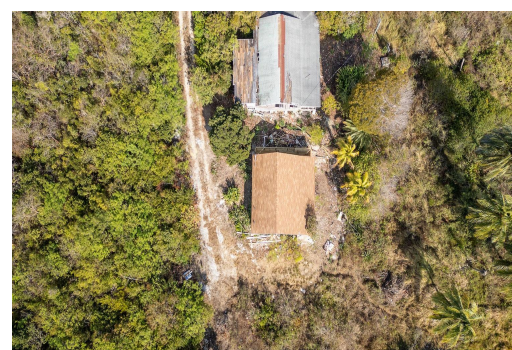
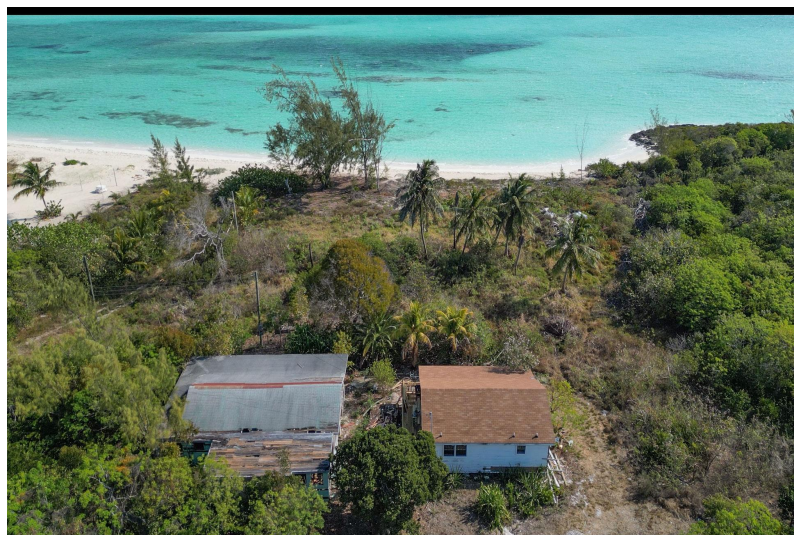
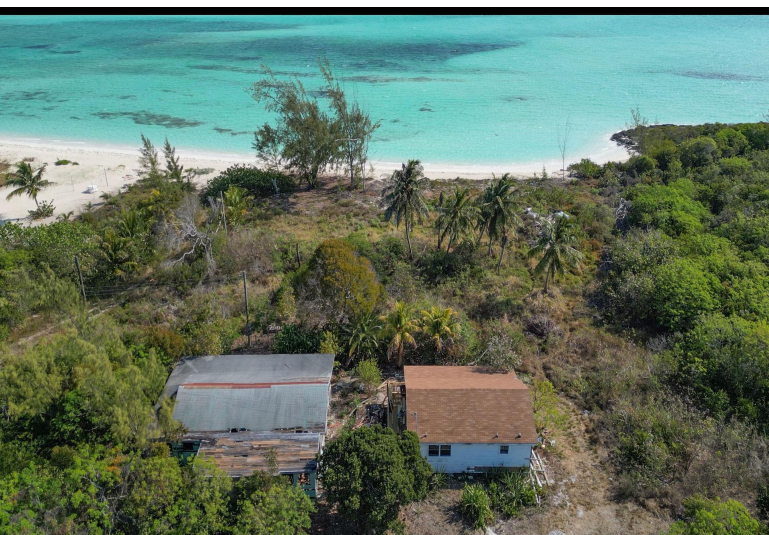


PARCEL C HOPE HILL ESTATE, George Town, Exuma & Exuma Cays



Discover your slice of paradise: spanning 20,440 square feet, this parcel presents an exceptional...

Discover your slice of paradise: spanning 20,440 square feet, this parcel presents an exceptional opportunity to create your dream home or vacation retreat in one of the Caribbean's most coveted locations. Envision two cozy beach cottages for your family and guests to immerse themselves in the natural beauty of Great Exuma, where every day feels like a getaway. Enjoy leisurely strolls along the shoreline, indulge in water activities such as snorkeling or kayaking, or simply unwind as you soak in the breathtaking scenery. This property includes two charming cottages that need a little TLC, providing the perfect canvas for your personal touch. Don't miss your chance to own a piece of paradise....read more on our website.

Bedrooms: 2

Bathrooms: 1

Lot Size: 20440

Subdivision: George Town

Features: Easy Access,

Family Oriented, None,

Quiet Area

PARCEL C HOPE HILL ESTATE,

George Town, Exuma &

Exuma Cays

Phone:



\$440.000 ID# M57655 [View Online](#)
www.sarlesrealty.com