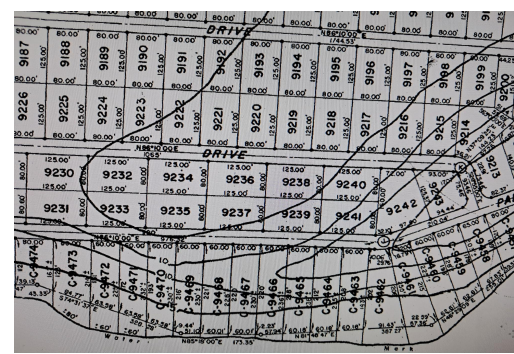


# NORAMA DRIVE, Bahama Sound, Exuma &#038; Exuma C



**Located across the road from waterfront lots, there is a view of the sea/bonefish flats at the...**

Located across the road from waterfront lots, there is a view of the sea/bonefish flats at the south. There are power lines are very near by. This area allows for quiet and peacefulness. George Town, the main hub of the island for grocery shopping, business offices, marina and beach access is about a 10-minute drive away. The international airport that has daily domestic and international flights is about a 20-minute drive away. This lot offers great potential for an opportunity to build a residential home for personal use or for vacation rental investment....read more on our website.

Bedrooms: 0

Bathrooms: 0

Lot Size: 10000

Subdivision: Bahama Sound

Features: Can Be Rented,  
Family Oriented, None,  
Road - Gravel, View -  
Ocean

PANORAMA DRIVE, Bahama  
Sound, Exuma &#038; Exuma  
Cays  
Phone:



**\$12,000 ID# M61370** [View Online](#)  
[www.sarlesrealty.com](http://www.sarlesrealty.com)