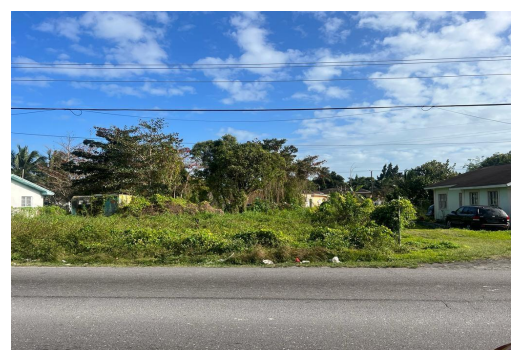


# GLENISTON GARDENS, Prince Charles Drive, New Providence/Paradise Island



**This lot is located on Soldier Road with access to main thoroughfares such as Prince Charles...**

This lot is located on Soldier Road with access to main thoroughfares such as Prince Charles Drive, Village Road and East Street South. It is centrally located with easy access to shopping, schools and malls. It is an excellent lot for a family and is priced to sell....read more on our website.

Bedrooms: 0  
Bathrooms: 0  
Lot Size: 11250  
Subdivision: Prince Charles Drive  
Features: Easy Access, Level Lot, None

Lot 4 GLENISTON GARDENS,  
Prince Charles Drive, New Providence/Paradise Island  
Phone:



**\$115,000 ID# M61396 [View Online](#)**  
**[www.sarlesrealty.com](http://www.sarlesrealty.com)**