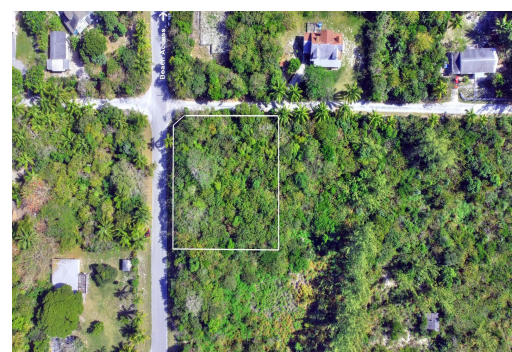
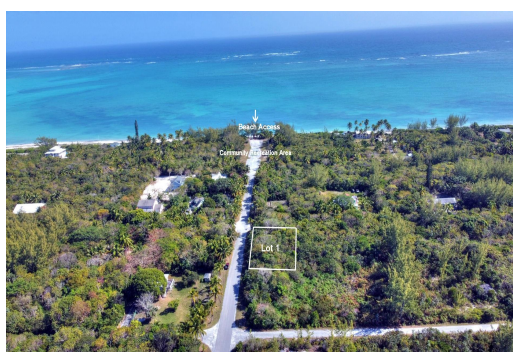
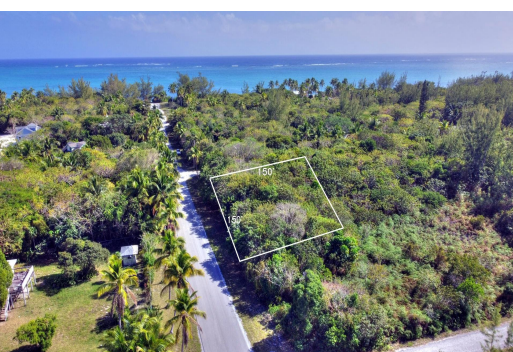


LOT 1 BAHAMA PALM SHORES, Bahama Palm Shores, Abaco



Nestled just steps from the stunning 8 Mile Beach, Lot 1 in G Block offers 21450 sq. ft. of lush...

Nestled just steps from the stunning 8 Mile Beach, Lot 1 in G Block offers 21450 sq. ft. of lush native foliage, teeming with vibrant wildlife. This prime corner lot is perfectly situated in the heart of Bahama Palm Shores, a rapidly growing community known for its natural beauty and relaxed island lifestyle. Enjoy the best of coastal living with easy access to the community's recreation area, featuring Bocce and Pickleball courts—perfect for staying active and social. Whether you're looking to build your dream home or invest in a slice of paradise, this lot is an incredible opportunity in one of the Abaco's most desirable locations. Don't miss out on this rare find—contact us today for more details!...read more on our website.

Bedrooms: 0

Bathrooms: 0

Lot Size: 21450

Subdivision: Bahama Palm Shores

Features: Easy Access,
None, Pets Allowed,
Quiet Area, Road -
Paved, Treed Lot

LOT 1 BAHAMA PALM SHORES,
Bahama Palm Shores, Abaco
Phone:



\$55,000 ID# M61183 [View Online](#)
www.sarlesrealty.com