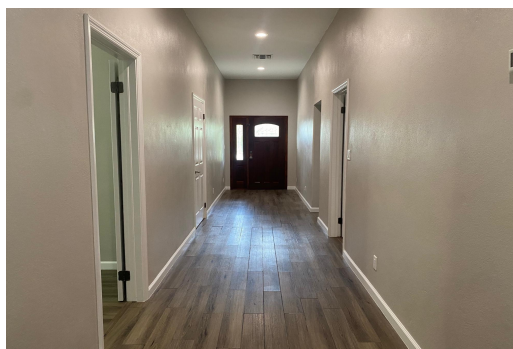


CHARLOTTEVILLE, Charlotteville, New Providence/Paradise



Welcome to this stunning 2,113 sq.ft. residence, perfectly situated in a secure gated community...

Welcome to this stunning 2,113 sq.ft. residence, perfectly situated in a secure gated community offering both comfort and convenience. As you step inside, you're greeted by a spacious foyer that flows into an open airy layout, accentuated by 10-foot ceilings. This beautifully designed 3 bed, 2.5 bath home features hurricane impact windows, laminated wood flooring, combining elegance with durability. The kitchen is a chef's dream, boasting stainless steel appliances, granite countertops, solid wood built-in cabinetry, providing ample storage and timeless style. A dedicated washroom adds to the home's functionality. Built with fully foam-insulated construction for energy efficiency and equipped with a back up generator, this home ensures comfort in any season. Enjoy a resort style lifestyle ...read more on our website.

Bedrooms: 3
Bathrooms: 3
Lot Size: 7200
Subdivision: Charlotteville
Features: 24 Hour Security, Easy Access, Family Oriented, Garden Area, Gated Community, Golf Course Nearby, Highway Access, Hurricane Windows, Jetted Bathtub, Kitchen Built-in(s), Landscaped, Quiet Area, Road - Paved, Shopping Nearby, Stand-by Generator

191 CHARLOTTEVILLE,
Charlotteville, New
Providence/Paradise Island
Phone:



\$980.000 ID# M61654 [View Online](#)
www.sarlesrealty.com