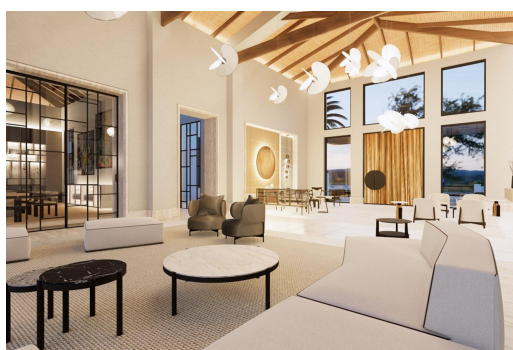


# ZOI, ALBANY, South Ocean, New Providence/Paradise Island



**Situated at the entrance of the prestigious Equestrian Estates at Albany, ZOI is a masterful modern...**

Situated at the entrance of the prestigious Equestrian Estates at Albany, ZOI is a masterful modern interpretation of a courtyard home. Spanning 1.2 acres, this estate offers approximately 12,000 square feet of air-conditioned living space, thoughtfully designed by renowned architect THA and interior designer CVC. The residence features a truly iconic design, blending striking interiors with lush landscaping to create a seamless indoor-outdoor experience. Stepping into the living area, you are welcomed by vaulted 16 ft high ceilings with rattan and wooden beams. Two intimate seating areas flank the entrance, while beyond, expansive living spaces feature floor-to-ceiling windows. Off the living room, the formal dining area showcases a grand 16-seat table and a full-wall panoramic window, of...read more on our website.

Bedrooms: 7

Bathrooms: 7

Lot Size: 52272

Subdivision: South Ocean

Features: Acreage,

Family Oriented, Guest

House, Highway Access,

Pets Allowed, Quiet Area,

Recreation Nearby, Road

- Paved, Shopping

Nearby, Swimming Pool

ZOI, ALBANY, South Ocean, New  
Providence/Paradise Island  
Phone:



**\$19.950,000 ID# M61771 View Online**  
**[www.sarlesrealty.com](http://www.sarlesrealty.com)**