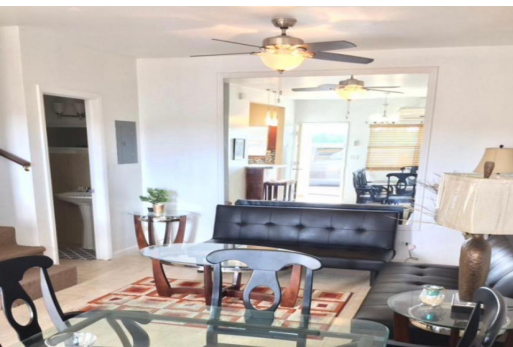


ROSARIO CONDO, West Bay Street, New Providence/Paradise Island



This gated townhouse on St. Alban's Drive is a great find. The property is well maintained...

This gated townhouse on St. Alban's Drive is a great find. The property is well maintained and features two bedrooms and two and a half bathrooms. St. Alban's Drive is conveniently located near to the Fish Fry/ Arawak Cay, Downtown Nassau and Saunder's Beach. It is only a 10 minute drive to Baha Mar. Schedule your appointment today....read more on our website.

Bedrooms: 2

Bathrooms: 2

Lot Size: 21230

Subdivision: West Bay Street, New Providence/Paradise Island

Features: Can Be Rented, Easy Access, Family Oriented, Furnished, Highway Access, Impact Shutters, Main Level

Entry, Recreation Nearby, Road - Paved, Shopping Nearby

ROSARIO CONDO, West Bay Street, New Providence/Paradise Island
Phone:



\$2,500 ID# M61791 [View Online](#)
www.sarlesrealty.com