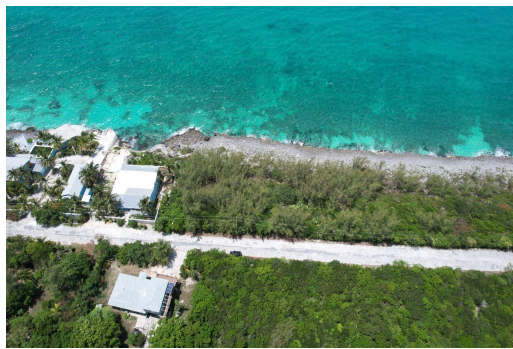
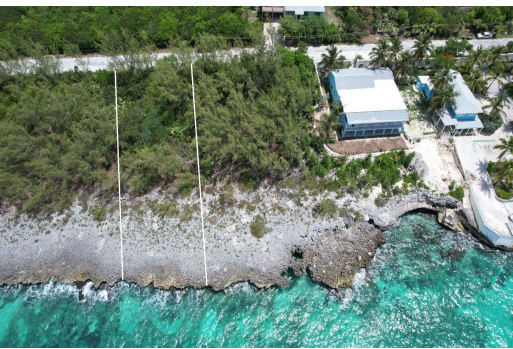


# WATERFRONT RAINBOW BAY, Rainbow Bay, Eleuthera



## Highly desirable waterfront lot 63, block 39, is now for sale! Located on the Caribbean side of the...

Highly desirable waterfront lot 63, block 39, is now for sale! Located on the Caribbean side of the island in Rainbow Bay and famous for its beautiful, calm azure waters, this is the perfect location to swim and snorkel year-round or sit on the deck and watch dolphins and other forms of marine life while you bask in the tranquility! Although Rainbow Bay is a quiet and peaceful sub-division not far from the Governor's Harbour airport, there are shops and beachfront cafes not far away. In fact, it is an excellent location for exploring this magical island, from Harbour Island and Spanish Wells in the North to Lighthouse Point in the South. See how many beaches you can discover! Explore the local settlements and try Bahamian delicacies such as conch salad and grouper fingers. This is the perf...read more on our website.

Bedrooms: 0

Bathrooms: 0

Lot Size: 13770

Subdivision: Rainbow Bay

Features: Easy Access,

Highway Access, None,

Quiet Area, Road -

Paved, Treed Lot, View -

Ocean, Waterfront -

Ocean

WATERFRONT RAINBOW BAY,

Rainbow Bay, Eleuthera

Phone:



**\$169,000 ID# M61501** [View Online](#)  
[www.sarlesrealty.com](http://www.sarlesrealty.com)