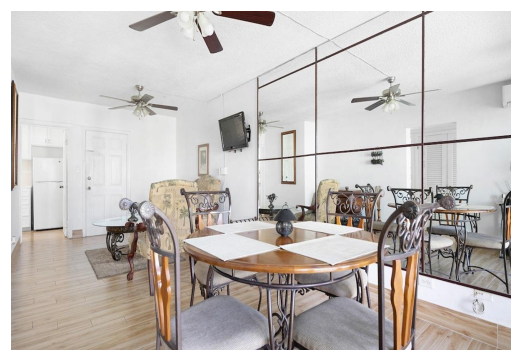
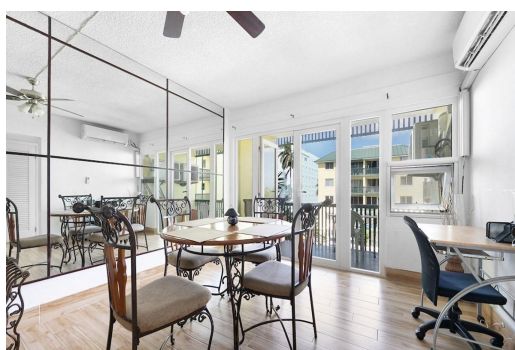
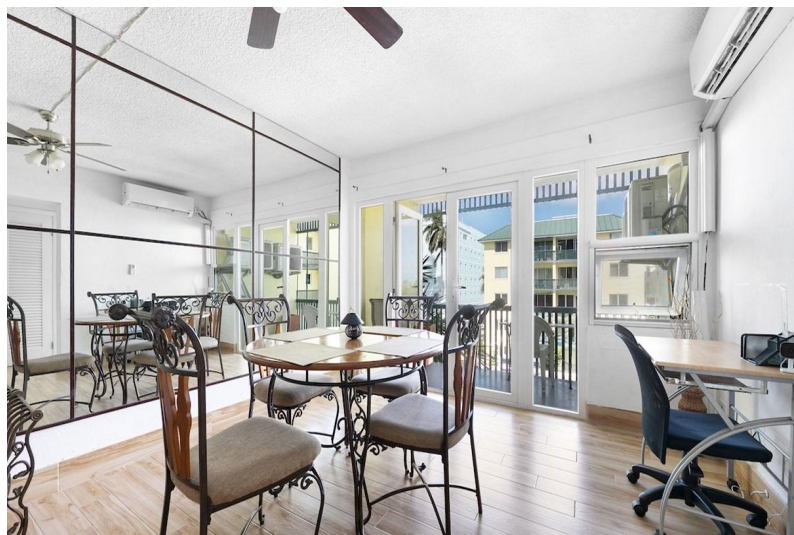
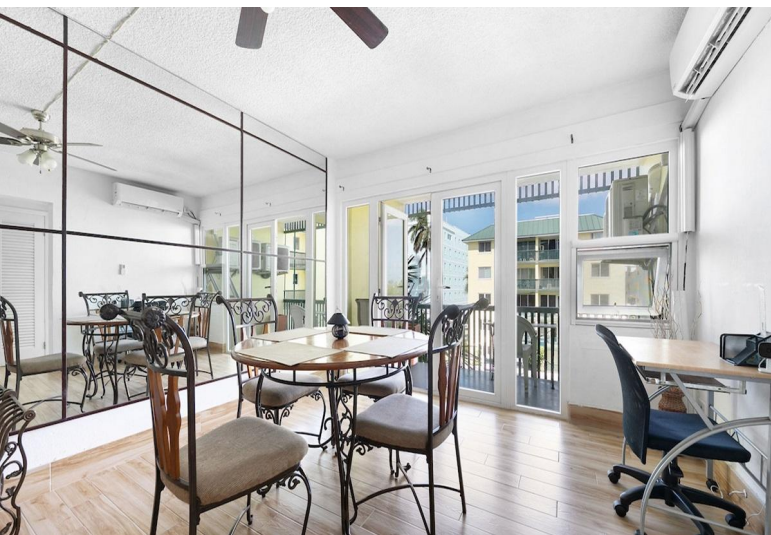


TOWN COURT CONDOMINIUMS, West Bay Street, New Providence/Paradise Island



Located on the second floor of "B" Block, this recently completely renovated apartment faces...

Located on the second floor of "B" Block, this recently completely renovated apartment faces north, looking over the communal swimming pool and out towards the harbor. It is a very bright, open, and clean apartment with a north-facing balcony off the living /dining room. The apartment has been updated, with new floor tiling throughout, as well as new electric wiring and plumbing. An electric instantaneous hot water heating system has been installed; four new electric fans with overhead lights have been installed; there are two split system a/c units as well as one wall unit (in the second back bedroom). The balcony provides a useful space to enjoy morning coffee and evening cocktails. There is existing cable wiring in the main living area and in each of the bedrooms. All glass windows ...read more on our website.

Bedrooms: 2
Bathrooms: 1
Lot Size: 950
Subdivision: West Bay Street
Features: Appliances Only, Easy Access, Family Oriented, Highway Access, Landscaped, Partial Furnished, Pets Allowed, Recreation Nearby, Road - Paved, Shopping Nearby, Short Term Allowed, Swimming Pool

TOWN COURT
CONDOMINIUMS, West Bay
Street, New Providence/Paradise
Island
Phone:



\$250,000 ID# M61234 [View Online](#)
www.sarlesrealty.com