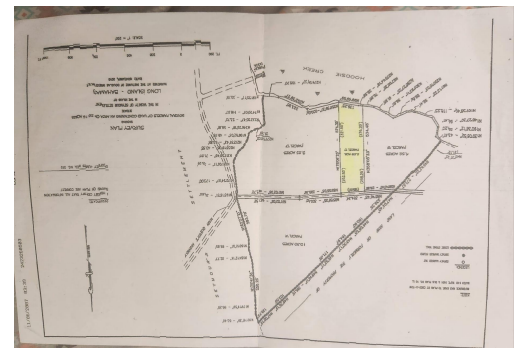


PARCEL C, SEYMOUR'S, Seymour's, Long Island



This two-acre lot is situated on the water, Hoodsie Creek in the vicinity of Seymour's, LI...

This two-acre lot is situated on the water, Hoodsie Creek in the vicinity of Seymour's, LI. It is also minutes from the famous Columbus Monument / Lucayan Memorial and also, Cape Santa Maria Resort that has a 3-mile long sandy beach. It is a protected inlet. It has the potential for a dock for small boats and crafts. Though in the water, it is elevated approximately 40 ft. above sea level. It boasts beautiful sunset views. Utilities such as BTC and BPL services are available. This is an excellent and very rare opportunity for a lot in an up and coming, undiscovered beauty in the Bahamas....read more on our website.

Bedrooms: 0
Bathrooms: 0
Lot Size: 91040
Subdivision: Seymour's
Features: Acreage, Can Be Rented, Canal Front, Family Oriented, None, Phone to Lot, Road - Paved, View - Ocean

PARCEL C,
SEYMOUR'S,
Seymour's, Long Island
Phone:



\$150,000 ID# M61811 [View Online](#)
www.sarlesrealty.com