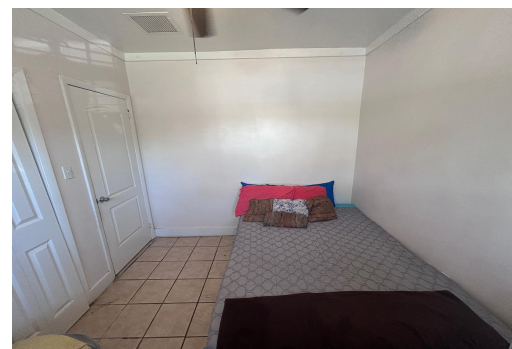


ORCHARD CLOSE, Sea Breeze, New Providence/Paradise Island



This well-maintained triplex on Sea Breeze Lane is an income-generating property featuring two...

This well-maintained triplex on Sea Breeze Lane is an income-generating property featuring two 2-bedroom, 1-bathroom units, and one 1-bedroom, 1-bathroom unit. Each unit is in good condition with central air conditioning. The property offers ample parking and is situated on a corner lot for easy access. Located in a popular rental community, it is close to shopping, recreation, and bus stops....read more on our website.

Bedrooms: 5

Bathrooms: 3

Lot Size: 4900

Subdivision: Sea Breeze, New Providence/Paradise Island

Features: Can Be Rented,

Phone:

Family Oriented, Fully

Fenced, Recreation

Nearby, Shopping Nearby



\$450.000 ID# M61936 [View Online](#)
www.sarlesrealty.com