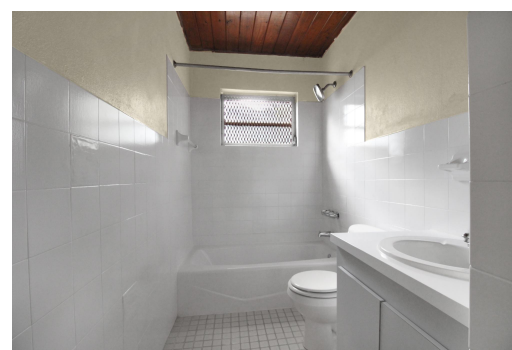


# 19 SWORDFISH ROAD, Stapledon Gardens, New Providence/Paradise Island



## Discover your ideal Bahamian rental in the tranquil Stapledon Gardens! This inviting property...

Discover your ideal Bahamian rental in the tranquil Stapledon Gardens! This inviting property features impressive over 16ft high ceilings, showcasing a beautiful rafters' tongue-and-groove design that adds character and airiness. The recently renovated living area boasts stylish and easy-to-maintain wood-plank porcelain tiles, perfect for island living. You'll find two comfortable bedrooms with equally high ceilings, a practical bedroom/office space in the renovated attic, and a newly updated bathroom. Offering approximately 1150 sq. ft. of living space, this home also boasts a fantastic yard filled with mature fruit trees – enjoy fresh star fruit, soursop, peach, scarlet plum, bananas, and more right outside your door! Enjoy the convenience of being just a short distance from the beauti...read more on our website.

Bedrooms: 2  
Bathrooms: 1  
Lot Size: 9600  
Subdivision: Stapledon Gardens  
Features: Fully Fenced, Garden Area, Partial Furnished

19 SWORDFISH ROAD,  
Stapledon Gardens, New  
Providence/Paradise Island  
Phone:



**\$2.600 ID# M62060** [View Online](#)  
[www.sarlesrealty.com](http://www.sarlesrealty.com)