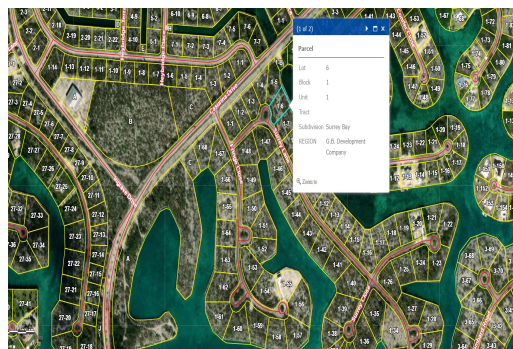
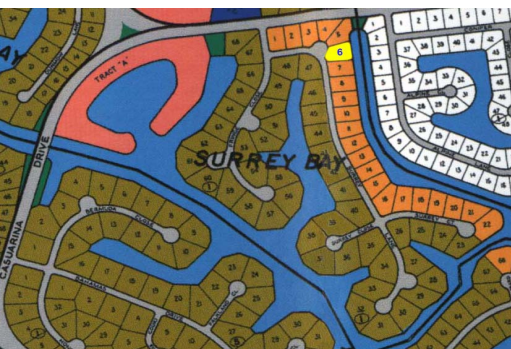
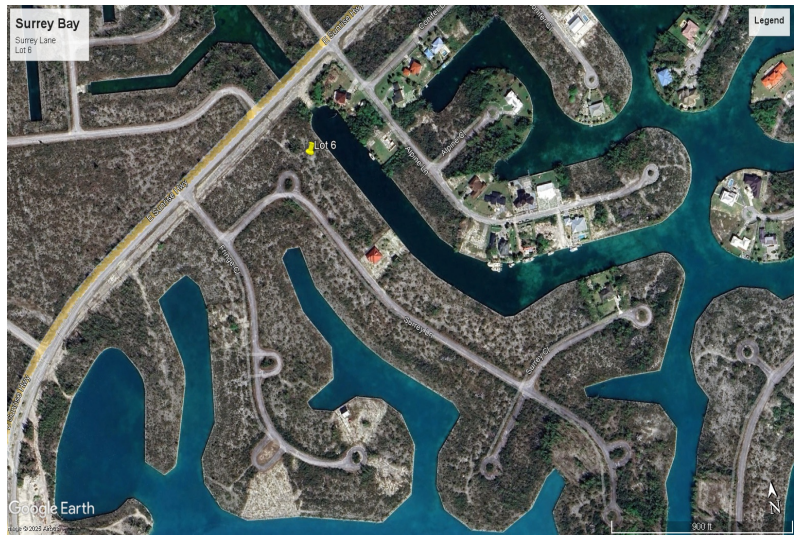
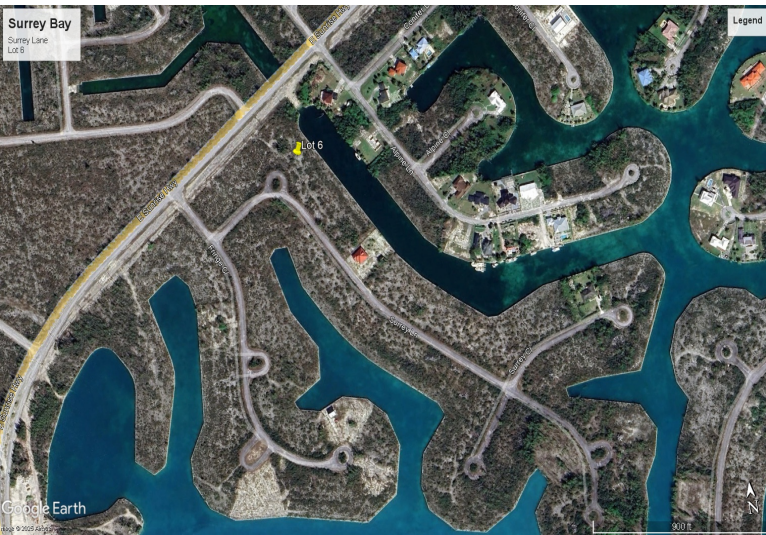


Prime Waterfront Multifamily Lot in Surrey Bay



Nestled in the prestigious Surrey Bay on Surrey Lane, this exceptional property offers 155 feet of...

Nestled in the prestigious Surrey Bay on Surrey Lane, this exceptional property offers 155 feet of pristine water frontage along the Grand Lucayan Waterway—an unparalleled location for waterfront living or investment development.

Spanning 26,562 sq. ft. (0.61 acre), this multifamily-zoned lot presents a rare opportunity to build a luxurious waterfront residence, townhomes, or an income-generating development. With direct access to the waterway, future residents can enjoy boating, breathtaking views, and the serene ambiance of this sought-after locale.

Key Features:

155 feet of water frontage on the Grand Lucayan Waterway

26,562 sq. ft. / 0.61 acre lot size

Zoned for multifamily development

Prime location in Surrey Bay, a desirable waterfront comm...read more on our website.

Lot Size: 0.61

Living Area: 26,562

Subdivision: Surrey Bay

Features: Canal Front



Ina Simmons

Phone: 242-727-0707

inasimmons@gmail.com



\$110,000 ID# 1070147 [View Online](#)
www.sarlesrealty.com